



ET51 & ET56 Android and Windows

Configuration & Accessories Guide

Designed to assist customers and partners
with model and configuration guidance

October 2019



ET51 & ET56 Tablet Configuration Matrix

Configuration Matrix

CONFIGURATION OPTIONS	ET5XXX – XXXX – XXXX	OPTION	DESCRIPTION
Radio	ET5 1 XX – XXXX – XXXX	1	Wi-Fi (no WAN)
	ET5 6 XX – XXXX – XXXX	6	WAN
Modems - Region	ET5X A X – XXXX – XXXX	A	No WAN – WLAN only - Intel
	ET5X B X – XXXX – XXXX	B	WAN – Worldwide Intel / Telit
	ET5X C X – XXXX – XXXX	C	No WAN - LAN Only -Qualcomm
	ET5X D X – XXXX – XXXX	D	WAN - Worldwide - Qualcomm
Display	ET5XX E – XXXX – XXXX	E	Eight Inch (8.4")
	ET5XX T – XXXX – XXXX	T	Ten Inch (10.1")
OS Key	ET5XXX – W XXX – XXXX	W	Windows
	ET5XXX – G XXX – XXXX	G	Android GMS
Processor	ET5XXX – X 1 XX – XXXX	1	E3940 – Intel
	ET5XXX – X 2 XX – XXXX	2	SD660 / SDM660
Memory	ET5XXX – XX 1 X – XXXX	1	4 GB RAM / 32 GB Flash
	ET5XXX – XX 2 X – XXXX	2	4 GB RAM / 64 GB Flash
	ET5XXX – XX 3 X – XXXX	3	4 GB RAM / 128 GB Flash
	ET5XXX – XX 4 X – XXXX	4	8 GB RAM / 64 GB Flash
	ET5XXX – XX 5 X – XXXX	5	8 GB RAM / 128 GB Flash
OS Localization	ET5XXX – XXX X – XXXX	E, F, I, G, S, M, C, P, H, J, SW, K, R	E = English, F = French, I = Italian, G = German, S = Spanish, M = Chinese Simplified, C = Chinese Traditional, P = Brazilian Portuguese, H = Hebrew, J = Japanese, SW = Swedish, K = Korean, R = Russian
Suffix / Custom Product	ET5XXX – XXXX – 00 XX	00	None
	ET5XXX – XXXX – MT XX	MT	Mounted Tablet
Suffix / Custom Product	ET5XXX – XXXX – XX	Blank	None
	ET5XXX – XXXX – XX NA	NA	Android only – US, Canada and Puerto Rico 802.11ac
	ET5XXX – XXXX – XX A6	A6	Android only - ROW 802.11ac

ET51 & ET56 Accessory Ecosystem

Accessory Ecosystem Overview

Internal batteries
(Specific part numbers for new ET51 / ET56 on pg. 13.)



Optional PowerPack Battery



4-Slot Aux Battery Charger



Operations Case



Expansion Back + Rotating Hand Strap



SE4750 and SE4710 Expansion Back + Rotating Hand Strap



Rugged Frames



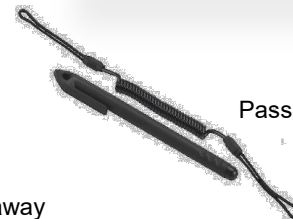
D-Clips



Handle

Breakaway shoulder strap

Passive Stylus



Single-Slot Cradle

Single-Slot Charge Dock

Rugged Charge Connector

ShareCradle System

One of these four solutions *is required* for tablet charging (pp. 6-8).

ShareCradle System & PowerPack Chargers



4-Slot ShareCradle



CRD-ET5X-SE4CO1-01
ET5X 4-Slot Charge Only Cradle

- Introducing the ShareCradle System:
 - Terminal & Spare Battery Cups designed to be shared across the Zebra suite of Charge Only bases providing flexible & future proofed charging solutions.
- Solution for either: 4 ET5x or 4 ET5x & PowerPack Charger
- Option to mount and power a 4-Slot PowerPack Charger
- Fits on a tabletop, wall mounted, or rack mounted (requires 19 in. rack mounting accessory)
- Accepts ET5x Tablets with or without **Expansion Backs**
- Accepts ET5x Tablets with or without **Rugged Frames**
- **Note:** ShareCradles require Power Supply (PWR-BGA12V**108**W0WW), DC Line Cord (CBL-DC-38**2**A1-01), and country specific AC Line Cord (e.g. 23844-00-00R); **Sold Separately**



4-Slot PowerPack Charger



SAC-ET5X-4PPK1-01
ET5X 4-Slot Battery Charger for Optional PowerPack

- Standalone 4-slot charger with charge state indicator LEDs
- Can be docked in 4-slot ShareCradle via adapter cup
 - Still requires its own power supply
- **Note:** 4-Slot PowerPack Chargers require Power Supply (PWR-BGA12V**50**W0WW), DC Line Cord (CBL-DC-38**8**A1-01), and country specific AC Line Cord (e.g. 23844-00-00R); **Sold Separately**



Charging Cradles and Docks with Communication Ports



Charge Only 1-Slot Dock



CRD-ET5X-1SCG2

ET5X 1-Slot Charge Only Dock

- Supports charging with and without Rugged Frames
- Only works with exposed standard (not rugged) connector
- Accepts ET5x Tablets with or without **Expansion Backs**
- Accepts ET5x Tablets with or without **Rugged Frames**
- **Note:** Requires Power Supply (PWR-BGA12V50W0WW), DC Line Cord (CBL-DC-388A1-01), and country specific AC Line Cord (e.g. 23844-00-00R); **Sold Separately**



Charge & Communication 1-Slot Dock



CRD-ET5X-1SCOM1

ET5X 1-Slot Charge and Communication Dock

- Supports charging with and without Rugged Frames
- Charges and extends I/O for: HDMI, Ethernet & 3 USB ports
- Accepts ET5x Tablets with or without **Expansion Backs**
- Accepts ET5x Tablets with or without **Rugged Frames**
 - **Does not support Rugged I/O connector in the Rugged Frame**
- **Note:** Requires Power Supply (PWR-BGA12V50W0WW), DC Line Cord (CBL-DC-388A1-01), and country specific AC Line Cord (e.g. 23844-00-00R); **Sold Separately**



Rugged Charging Docks, Cable Chargers, and I/O Connectors



Rugged Charge & Comms 1-Slot Dock



Pogo Pin I/O connector

Sealed I/O Connector comes with rugged frame

CRD-ET5X-1SCOM1R

1-Slot Dock with Rugged IO Adapter

- Charges & extends Rugged I/O for HDMI, Ethernet, 3 USB Ports
- Only works with Rugged Frame with Rugged I/O Connector
- **Note:** Requires Power Supply (PWR-BGA12V50W0WW), DC Line Cord (CBL-DC-388A1-01), and country specific AC Line Cord (e.g. 23844-00-00R); **Sold Separately**



Rugged Charging Adaptors



CHG-ET5X-CBL1-01

Rugged Charge Connector (Charge dongle)

- Rugged charge cable breaks away to prevent tablet damage
- DC barrel input on the side
- Works on tablets with or without Rugged Frames
- Includes shim to use with tablets without Rugged Frames

- **Note:** Require Power Supply (PWR-BGA12V50W0WW), DC Line Cord (CBL-DC-388A1-01), and country specific AC Line Cord (e.g. 23844-00-00R); **Sold Separately**



SG-ET5X-RGIO2-01

Replacement Rugged I/O Connector

- Replacement I/O connector for Rugged Frames (if needed)
- This part is included when ordering a new Rugged Frame
 - (e.g. SGET5X-8RCSE2-02, SG-ET5X-10RCSE2-01)

Rugged Frames, D-Clips & Tethers

8 in. & 10 in. Rugged Frames



SG-ET5X-8RCSE2-02

8 in. Rugged Frame with Rugged I/O connector (Included)



SG-ET5X-10RCSE2-01

10 in. Rugged Frame with Rugged I/O connector (Included)

- Improves drop protection to 6 ft / 2 m to concrete
- Sealed I/O connector replaces bottom dust cover
- Screw bosses on back to attach hand and shoulder straps
- Works with or without Expansion Backs

D-Clips & Tethers



SG-ET5X-DCLIP2-02

2 D-Clips attach to screw bosses in rugged frame



SG-TC7X-STYLUS-03

TC7X 3-Pack STYLUS + TETHER

- TC7X passive stylus (no batteries needed, more durable)
- 3-Pack + Tether (single stylus unit is not available)
- **Note:** will not work in areas where water is pooled on the screen



SG-ET5X-SLTETR-01

Stylus coil tether

- Coiled tether provides a convenient method to keep your tablet and pen together without compromising your usage experience

Operations Cases & Straps

8 in. & 10 in. Operations Case



FRONT VIEW

SG-ET5X-8HLST-01
8 in. Operations Case



BACK VIEW

SG-ET5X-10HLST-01
10 in. Operations Case

- Supports tablet *without* rugged frame
- Made of a leather with a pen loop for stylus
- D-Clip points in 4 corners support addition of:
 - Hand strap (sold separately)
 - Shoulder strap (sold separately)
- Mounting points accommodate additional accessories
- Works with or without Expansion Backs

Shoulder & Hand Straps



SG-ET5X-SHDRSTP-01
Break away Shoulder Strap



SG-ET5X-HNDSTP-01
Handle strap

- Hand & Shoulder straps attach to rugged frame via D-Clips
- Break away shoulder strap releases from tablet to prevent damage when snagged
- Handle strap has plastic grips for carrying comfort

Integrated Scanner Expansion Backs with Rotating Hand Strap

SE4750 for Windows or Android OS



ZBK-ET5X-8SCN5-01 (Windows, 8 in.)
ZBK-ET5X-8SCN5-02 (Android, 8 in.)

ZBK-ET5X-10SCN5-01 (Windows, 10 in.)
ZBK-ET5X-10SCN5-02 (Android, 10 in.)

- Rotating Hand Strap base with Integrated Scanner
- Expansion back screws to back of tablet; replacing battery door
- Captures 1-D and 2-D bar codes in virtually any conditions, at lightning speed via Laser aimer
- **Note:** Optional Auxiliary PowerPack (**BTRY-ET5X-PRPK1-01**; ***sold separately***) can be inserted in base

SE4710 for Windows OS **Only**



ZBK-ET5X-8SCN1-01 (8 in.)

ZBK-ET5X-10SCN1-01 (10 in.)

- Rotating Hand Strap base with Integrated Scanner
- Expansion back screws to back of tablet; replacing battery door
- Captures 1-D and 2-D bar codes via LED aimer (Indoor use)
- **Note:** Optional Auxiliary PowerPack (**BTRY-ET5X-PRPK1-01**; ***sold separately***) can be inserted in base

Expansion Back (No Scanner) & Auxiliary PowerPack

Expansion Back (No Scanner)

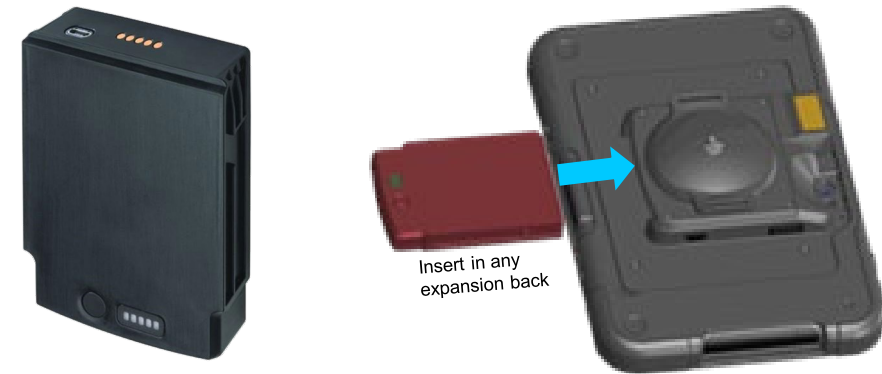


ZBK-ET5X-8RH1-01 (8 in.)

ZBK-ET5X-10RH1-01 (10 in.)

- Expansion back screws to back of tablet; replacing battery door
- Rotating Hand Strap base
- **Note:** Optional Auxiliary PowerPack (**BTRY-ET5X-PRPK1-01**; ***sold separately***) can be inserted in base

Auxiliary PowerPack Battery



BTRY-ET5X-PRPK1-01

24.5Wh of additional charging capacity (3400mAh @ 7.2V)

- Hot swappable; enables 24x7 usage
- Can be used in addition to the main battery capacity
- Charges with 4-slot battery charger (**SAC-ET5X-4PPK1-01**)
- Charges when Tablet & Expansion Back are in 1-slot Dock or ShareCradle
- Gas Gauge LED to display the amount of charge
- **Note:** Designed for use with ***any*** Expansion Back

ET51 & ET56 Internal Batteries

Internal Batteries for *Android OS*



BTRY-ET5X-8IN5-01
8 in. Tablet Internal Battery

- 6440mAh / 3.8V / 24.4Wh
- Rechargeable Li-Polymer; User replaceable
- 5-6 hours continuous WLAN usage with display on



BTRY-ET5X-10IN5-01
10 in. Tablet Internal Battery

- 9660mAh / 3.85V / 37.1Wh
 - Rechargeable Li-Polymer; User replaceable
 - 8-9 hrs continuous WLAN usage with display on
- **Note:** ET50 / ET55 internal batteries are **NOT COMPATIBLE** with the new ET51 / ET56 Tablets (and vice versa)

Internal Batteries for *Windows OS*



BTRY-ET5X-8IN3-01
8 in. Tablet Internal Battery

- 3300mAh / 7.6V / 25.1Wh
- Rechargeable Li-Polymer; User replaceable
- 5-6 hours continuous WLAN usage with display on



BTRY-ET5X-10IN3-01
10 in. Tablet Internal Battery

- 4950mAh / 7.7V / 38.1Wh
 - Rechargeable Li-Polymer; User replaceable
 - 8-9 hrs continuous WLAN usage with display on
- **Note:** ET50 / ET55 internal batteries are **NOT COMPATIBLE** with the new ET51 / ET56 Tablets (and vice versa)

ET51 & ET56 Third Party Offerings

The products on the following slides are designed, sold and serviced by parties outside Zebra Technologies.

They are offered through the third parties and their reseller networks and are not in Zebra's parts catalog.

*Zebra does **not** sell, support, nor formally test these products.*



[Gamber-Johnson / Zebra ET5x Tablet Docks & Cradles Web Page](#)

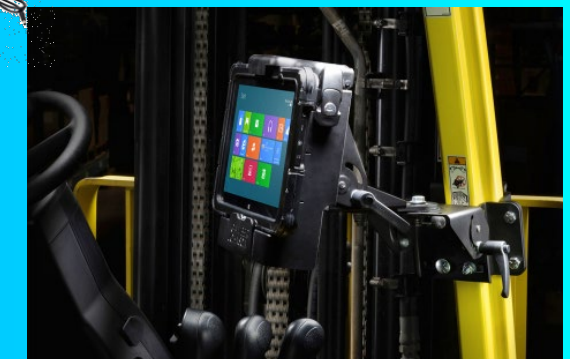
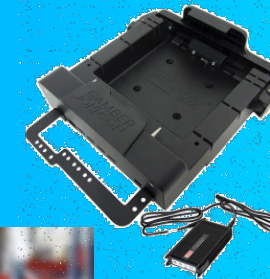
Gamber-Johnson Rugged Mounting Docks & Cradles

Keep Your Tablet Safe with Gamber-Johnson Dock or Cradle

- Designed by Gamber-Johnson to support rugged mounting needs; such as, forklifts, emergency vehicles, etc.
- Docking stations replicate tablet ports: USB, Ethernet, RF, and power. Ideal for connecting printers or other peripherals
- Cradles keep your tablet safe but do not replicate any ports. Use these to mount tablets without any peripherals
- Key lockable, VESA 75mm mounting pattern, and clamps to secure the tablet
- Only work with tablets equipped with rugged frame
- Compatible with accessories like expansion backs with scanners and optional power pack battery
- Keyboard mount offered to support iKey keyboards

3rd party designed, sold and serviced. Zebra does *not* sell, nor formally test.

ZEBRA TECHNOLOGIES



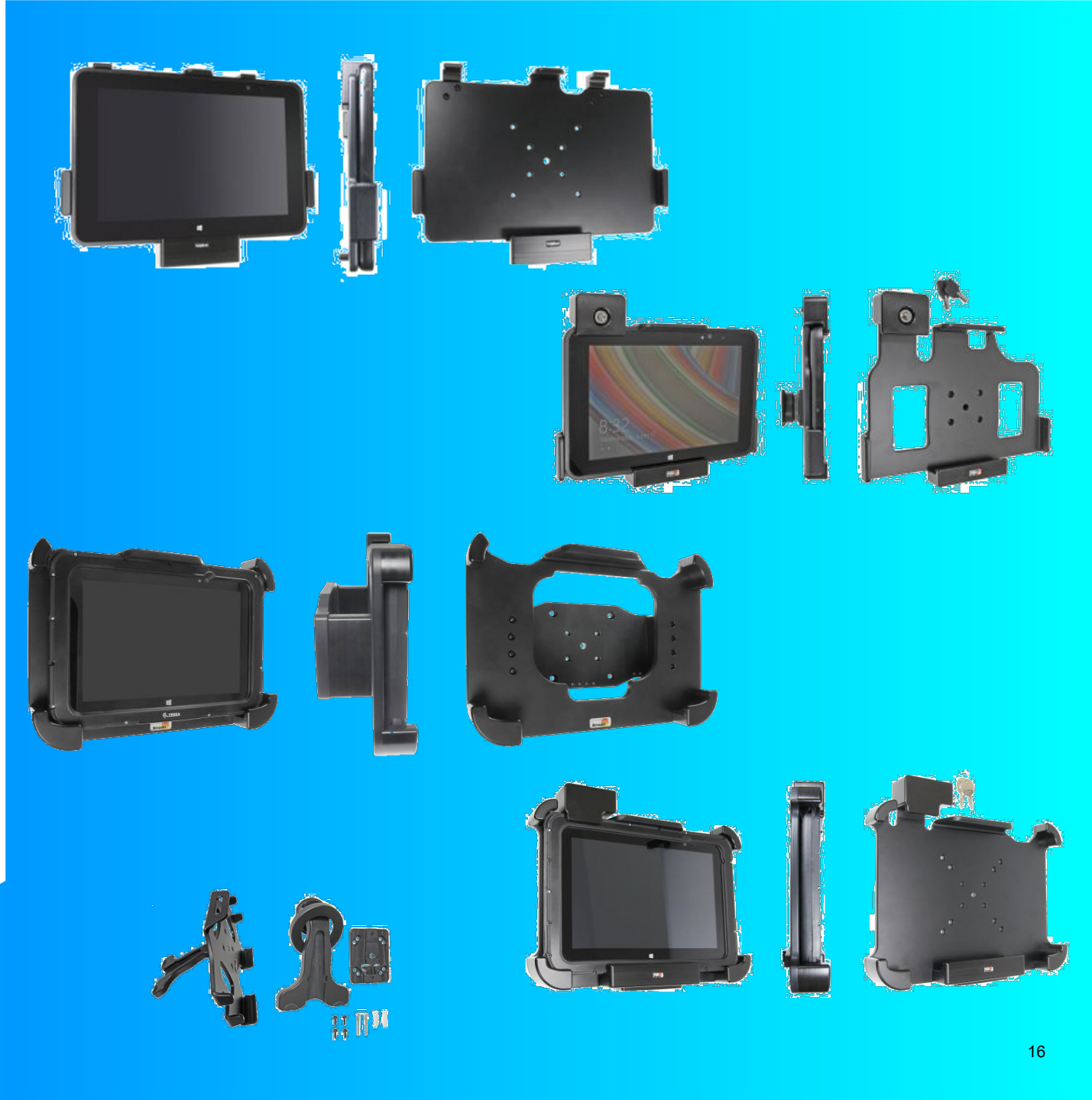


[ProClip / Zebra ET5x Tablet Holders Web Page](#)

ProClip Mounting Cradles

ProClip Precision Manufactured Mounting & Charging Solutions

- Custom designed by ProClip and offered through ProClip / Brodit channels and their reseller network
- Solutions to secure, power, and charge your Zebra mobile device.
- Ideal for delivery vehicle dashboard, warehouse picker, forklift cage, hospital mobile cart, retail counter applications
- Keep your Zebra device within reach and ready to go to work
- Key lock option supported
- Rugged frame and non-rugged frame tablets options are available



3rd party designed, sold and serviced. Zebra does *not* sell, *nor* formally test.



[ENS / Tailwind Products Page](#)

ENS Payment & Mounting Solutions

ENS / Tailwind Mobile Payment and Tablet Mounting Solutions

- Verge Mobile Payment Mount (367-4406)
 - Seamlessly connects ET5x tablet with Verifone e355 payment device
 - Ergonomically designed hand grips for comfort and security
- Payment Mount for use with Rugged Frame
 - Verifone e355 (367-4882-A) or Ingenico iSMP4 (367-4899-A)
 - Secure either payment device to ET5x with Rugged Frame
 - Includes mounting plates to easily dock tablet & payment device combo
 - Can be used in combination with Expansion Back
- Genesis Charging & Communication (367-4818-R)
 - Charging tablet stand with power, 1 Ethernet, and 2 USB ports
 - Spring loaded quick release for greater mobility
 - 300° swivel and up to 90° tilt range, with high quality lock for security
 - Accommodates Expansion Back and available for tablets with or without Rugged Frame
- Genesis Low Profile Charging & Communication (367-4819-R)
 - All the features of standard Genesis line in a sleek, modern design



3rd party designed, sold and serviced. Zebra does *not* sell, *nor* formally test.



[ArmorActive / Zebra ET5x Tablet Mobility Web Page](#)

ArmorActive Payment & Mobility Solutions

ArmorActive Mobility and Deployment Solutions Worldwide

- RapidDoc & Kiosk Options
 - Multiple quick and easy tablet release options: RFID (included)
 - Software undock (PIN), Username / password, Biometrics, NFC
 - Universal base for connectivity with ET5x tablets (Windows or Android)
 - Easily fits into work environment, 6 USB Ports and wired Ethernet.
- Payment and Card Reader Options
 - Quick Release Latching Cradles for payment terminal support; includes Verifone e355 and Ingenico iSMP4 EMV readers
 - Custom designed Expansion Backs for payments; includes PAX D180, Verifone e355, Miura M010, and Ingenico iCMP
 - Sleek and durable Expansion Back for Magnetic Strip (MSR) and Smart Card (SRC) readers
 - Payment Peripheral Integration Options
 - Direct hardwired integration with up to 2 payment peripherals in the ArmorActive Enclosure



3rd party designed, sold and serviced. Zebra does *not* sell, *nor* formally test.



[InVue / Zebra ET5x Products Web Page](#)

InVue Security & Payment Docks

InVue Retail Security and Payment Docking Options

- Retail Security components increase sales, decrease theft, and improve profitability
- Flexible dock features 3-axis viewing, optional mobile POS device integration, and USB 2.0 ports
- Fixed dock for tablet display solution with a point-of-sale option; durable, versatile and tamper resistant
- Useful in any environment and features multiple stand options for counter display, wall mounted and pedestal.
- Create custom solutions that are customer-centric to ensure an ideal experience for retail viewing and mPOS



3rd party designed, sold and serviced. Zebra does *not* sell, *nor* formally test.



ZEBRA and the stylized Zebra head are trademarks of Zebra Technologies Corp., registered in many jurisdictions worldwide. All other trademarks are the property of their respective owners. ©2019 Zebra Technologies Corp. and/or its affiliates. All rights reserved.