

TA//ELEKTRONIKK



labelmate

THE WORLD'S LEADING MANUFACTURER OF
LABEL DISPENSERS, REWINDERS, UNWINDERS,
SLITTERS & COUNTING SOLUTIONS.

TA/ELEKTRONIKK

MISSION

LABELMATE's mission is to make label printing processes easier, faster and more effective by developing smart and durable devices that support their operator before, during or after the printing or application process.

HIGHEST QUALITY

The most easy-to-use, heavy-duty, and reliable products of their kind, every **LABELMATE** Product is built to rugged industrial-quality standards. Our product quality is reflected in the unmatched warranty program of 2 years limited warranty.

INNOVATION LEADERSHIP

While others copy, we innovate. We offer you the most innovative, complete and reliable product portfolio available on the market.

MADE IN BELGIUM, GLOBAL PRESENCE

LABELMATE's sales, support, **product engineering and manufacturing operations** are based in the centre of Europe, in the South of Brussels, Lot, BELGIUM, with products available in more than 70 countries around the world.

Our entire team stays with you all the way.

LABEL DISPENSERS	6
LABEL REWINDERS	10
TWIN-MATRIX	18
LABEL UNWINDERS	24
SLITTING SOLUTIONS	27
COUNTING SOLUTIONS	30
PRINT MECHANISMS	34
SPARE POWER SUPPLIES	36
QUICK-CHUCKS & VANES	37

WARRANTY CONDITIONS

At Labelmate, we do not settle for “good enough”. We strive to make the best products, with high quality components, ensuring your Labelmate product will perform for many years. By default, we offer a 2 years limited warranty.

As part of our sustainability strategy (Make Repair a Reflex) and with a focus on the circularity from our products, end-users within the EU-free trade zone, will be able to address a warranty claim or the repair from a broken device, directly with us. We will not direct them back to you, our reseller community, as we understand this is merely an administrative burden without added value nor profit.

All Labelmate products are warranted to the original end-user customer to be free from defects in materials and workmanship. If it is determined by Labelmate that a product has failed under the terms of this warranty, the product will be repaired or replaced at no charge to the customer. Labelmate reserves all rights to determination of coverage and liability under this warranty. The warranty period for all new Labelmate products is outlined below:

WARRANTY PERIOD	PRODUCTS COVERED
2 YEARS	LABEL REWINDERS
	LABEL UNWINDERS
	LABEL COUNTERS (mechanical parts only)
	LABEL SLITTERS (mechanical parts only)
	LABEL DISPENSERS
	PRINTER MECHANISMS
1 YEAR	POWER SUPPLY MODULES
	COUNTER MODULES
	ENCODERS
	ANY PRODUCTS NOT SPECIFIED ABOVE

- Any device returned for repair or exchange must have an RMA form.
- If you made a mistake in your order, don't worry, we will help you out. However, we will charge a restocking & repacking fee of 15% with a minimum of 25 Euros.
- Prices are in Euros, Ex-Works shipping point. PRICES DO NOT INCLUDE DELIVERY COSTS. Shipping is done with UPS Standard Service unless specified otherwise in the order.
- Drop-shipments (delivery directly to your customer) are possible at the cost of 12 euro, not including the UPS Shipment Cost.
- For orders below 100 euro (delivery cost not included) we will bring a cost of 15 euro into account.
- Prices and specifications are subject to change without notice & pictures are non-contractual.

WHAT'S NEW?

NEXT GENERATION DISPENSERS

The new Labelmate dispensers are redesigned to make labeling faster, easier, and more reliable.

They offer greater flexibility with a movable sensor, precise label positioning with a standard media guide, and improved performance through optimized speed control — all while remaining user-friendly, durable, and suitable for any industry.



More about the NextGen Label Dispensers at page 6.



UNIVERSAL SLITTER

A label slitter allows you to quickly turn wide, multiple-across label rolls into several smaller, individual rolls. This greatly boosts production speed and reduces printing costs. Labelmate's slitting solutions support media up to 255 mm wide and can slit up to five labels across. They're ideal for producing narrow labels efficiently.

More about this universal slitter at page 27

COUNTING STATIONS

The Count-Deluxe Station is an off-line solution for counting and handling large or heavy label rolls. It allows precise label counting, splitting large rolls into smaller ones, re-tensioning loose rolls, and rewinding in both directions with adjustable orientation.



More about these counting stations at page 32

LABEL DISPENSERS

LABELMATE label dispensers make label handling effortless with their **advanced peel-and-present design**. **Each label** is **automatically separated** from its backing and presented at the front—ready for immediate pickup by the operator. With a wide range of models, LABELMATE dispensers deliver speed, efficiency, and reliability for virtually any labeling application. Perfect for packaging, logistics, and production lines where time and accuracy matter most.

- ✓ **Save Time:** Eliminate manual peeling and boost productivity
- ✓ **Compact Design:** Small footprint fits easily on any desk or workstation
- ✓ **Quick Setup:** Ready to use in less than 30 seconds
- ✓ **XL Stainless Steel Version:** Increased autonomy for high-volume operations



FEATURES

- All Label Dispensers come with 35 mm core holders accepting all cores between 38 and 76 mm
- Maximum Label Roll Weight: 6 KG
- Minimum Speed: 2,67 cm/sec - maximum Speed: 16,7 cm/sec
- Power Supply: Input 100-240V 50hz / Output 15VDC - 4.33A
- Shipping Weight: 6 to 8 KG depending on model & selected options
- Limited Warranty of 2 Years, 1 Year on the Power Supply
- Dust and water resistance: Rated IP50

DIMENSIONS

- LD-115-RS/-U models:
W x D x H: 223 x 305 x 308,5 mm
- LD-115-RS-XL/-U-XL models:
W x D x H: 223 x 345,5 x 379 mm
- LD-165-RS/-U models:
W x D x H: 273 x 305 x 308,5 mm
- LD-165-RS-XL/-U-XL models:
W x D x H: 273 x 345,5 x 379 mm
- LD-225-RS-XL/-U-XL models:
W x D x H: 333 x 345,5 x 379 mm



WHAT'S NEW?

Our new dispensers are built to make labeling faster, easier, and more reliable. Key improvements include:

- ✓ **Full Flexibility:** Movable sensor adapts to multiple labels across and special shapes.
- ✓ **Precision Guaranteed:** Media-Guide included as standard for accurate label positioning.
- ✓ **Optimized Performance:** Linear speed control for both short and long labels.
- ✓ **User-Friendly:** Easy take-up mechanism for smooth operation.
- ✓ **Modern Look:** Improved and more attractive design for professional environments.

See how our new dispensers make the difference!

This **next-generation lineup** combines a **modern design, smarter features, and improved usability** — all **without raising the price.**



REGULAR LABELS

P/N	MODEL	MAX LABEL WIDTH	STAINLESS STEEL	PRICE
LMD030	LD-115-RS	up to 115 mm		590 €
LMD032	LD-115-RS-XL	up to 115 mm	x	720 €
LMD031	LD-165-RS	up to 165 mm		650 €
LMD033	LD-165-RS-XL	up to 165 mm	x	775 €
LMD034	LD-225-RS-XL	up to 225 mm	x	855 €

ALL LABELS, INCL TRANSPARENT & BLACK

P/N	MODEL	MAX LABEL WIDTH	STAINLESS STEEL	PRICE
LMD035	LD-115-U	up to 115 mm		690 €
LMD037	LD-115-U-XL	up to 115 mm	x	820 €
LMD036	LD-165-U	up to 165 mm		750 €
LMD038	LD-165-U-XL	up to 165 mm	x	875 €
LMD039	LD-225-U-XL	up to 225 mm	x	955 €

MODEL	MIN LABEL LENGTH	MIN LABEL WIDTH	MIN LINER WIDTH	MATERIAL THICKNESS
-RS/-RS-XL-models	6 mm	7 mm	11 mm	3 mm
-U/-U-XL-models	6 mm	12 mm	16 mm	3 mm

LABEL SPECS

- Min label specs can differ depending local lighting conditions and label specs (like reflection capacity)
- Min label length depending on shape and label material
- External roll diameter
LD-115 & LD-165: 220 mm,
XL-models: 300 mm



CHECK OUT OUR VIMEO ACCOUNT FOR EXTRA VIDEO'S
ABOUT THE NEXTGEN DISPENSERS



XL- DISPENSER LD-300-UNI

The LD-300-UNI is designed for the most demanding applications ! The unique dual motor functionality ensures smooth label dispensing using heavy label rolls up to 10 KG and an outer diameter of maximum 350 mm. LD-300 for labels up to 218 mm wide.

- ✓ Dual motor design for handling heavy rolls
- ✓ Easy setup in less than 30 seconds
- ✓ Can handle inside- and outside-wound labels
- ✓ Soft touch control panel with LED-Status indication
- ✓ End-of-paper detection included



REGULAR LABELS

P/N	MODEL	LABEL WIDTH	MIN LABEL LENGTH	PRICE
LMD020	LD-300-UNI	up to 218 mm	50 mm	2495 €

FEATURES

- Adjustable sensor makes it easy to define the peel-off position on the blade
- Comes with a quick-locking "Quick-Chuck" permitting the fastest loading and unloading of cores and label rolls
- Comes standard for using cores in 76 mm.
On request available in 38/40/44/70 mm
- Bi-directional for internal & external wound labels
- Max Label Roll weight: 10 KG

DIMENSIONS

- W x D x H: 483 x 381 x 400 mm
- Shipping Weight: 36 KG, shipped in wooden crates

LABEL REWINDERS

Rewinders are efficient time savers that **rewind material into clean and uniform rolls**. Label rewinders wind up labels into a roll as they come out of a printer. If you don't use a rewinder, you have to gather up the labels by hand once the printing job is finished. A rewinder is much more **convenient and saves you time**.

CHOOSING YOUR REWINDER

With over 30 different possible configurations, Labelmate offers a rewinder for every application, for all printer types and for every budget. Hereby an overview of the different families and main features.

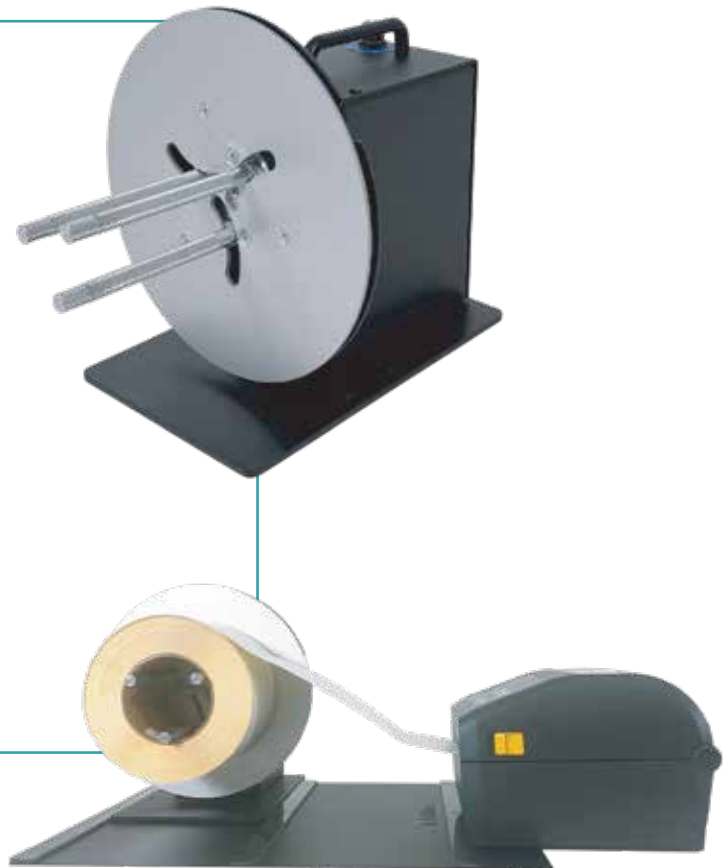
LABEL REWINDERS					
	LINE	PRINTER TYPE	MAX LABEL WIDTH	MAX SPEED @ START	MAX ROLL DIAMETER
	MINI-CAT	DESKTOP & MID-RANGE LOW-SPEED	125 mm	50 cm/sec	220 mm
	CAT-3 CAT-40G/V2	INDUSTRIAL & MID-RANGE HIGH-SPEED	270 mm	38-125 cm/sec	280-400 mm
	UNI-CAT	COLOUR & INDUSTRIAL	270 mm	80 cm/sec	280-400 mm
	ZCAT	COLOUR, HIGH RESOLUTION & RFID	255 mm	125 cm/sec	300 mm

LABEL REWINDERS

MINI-CAT REWINDERS MC-10/MC-11

The MINI-CAT rewinders are the world's most popular entry-level label rewinders to be used in combination with small desktop or mid-range barcode printers. With a specially designed bi-directional motor, they offer trouble-free performance at an incredible low cost.

- ✓ Small footprint to fit on any desk
- ✓ Easy setup: attach the labels to the take-up core and ready to start
- ✓ Speed up to 50 cm/sec to work with desktop or mid-range barcode printers
- ✓ Bi-Directional
- ✓ Large capacity for roll diameters up to 220 mm
- ✓ MC-11 model employs an adjustable core holder (ACH) enabling the use of varying core sizes from 25 mm to 101 mm
- ✓ Adjust the rewind force with a built-in potentiometer



MC-11 with Alignment Plate

FEATURES

- Maximum Label Roll Weight: 4 KG
- Maximum Roll Diameter: 220 mm
- Maximum Speed: 50 cm/sec at the beginning of a 76 mm core roll
- An external command interface on the '+' models to support direct control start/stop by the barcode printer (check compatibility with your printer vendor).
The MC+ can react to different types of signals provided by the printer. Selection of the signal nature is done via 2 jumpers on the internal PCB.
Four modes selectable: Open Collector High Active, Open Collector Low, Logic Level High (MAX10VDC) & Logic Level Low (MAX10VDC). Factory setting is "Open Collector High", other settings on request.

DIMENSIONS

- W x D x H: 220 x 305 x 195 mm
- Shipping Weight: 6 to 8 KG depending on model & selected options

MINI-CAT-MODELS

P/N	MODEL	DESCRIPTION	MAX LABEL WIDTH	PRICE
LMR001	MC-10	Standard for rewinding on cores 76 mm. On request for core diameters 38/40/44/50/70/100 mm.	125 mm	430 €
LMR002	MC-10-1-INCH	Standard for rewinding on cores 25,4 mm.	125 mm	440 €
LMR030	MC-10+	Including External Control. Standard for rewinding on cores 76 mm. On request for core diameters 38/40/44/50/70/100 mm.	125 mm	480 €
LMR031	MC-10+-1-INCH	Including External Control. Standard for rewinding on cores 25,4 mm.	125 mm	490 €
LMR003	MC-11	With Adjustable Core Holder, for rewinding on cores between 25 and 101 mm diameter.	115 mm	460 €
LMR032	MC-11+	Including External Control. With Adjustable Core Holder, for rewinding on cores between 25 and 101 mm diameter.	115 mm	510 €

MINI-CAT-OPTIONS

P/N	MODEL	DESCRIPTION	PRICE
LMX587	UNIVERSAL ALIGNMENT PLATE for MC		85 €
LMX441	APG-MC	Adjustable Paper Guide. Guides outer edge of label to ensure an even roll edge.	35 €
LMX440	EXT. FLANGE-MC-10	External Flange for MC-10 & MC-10+. Diameter 220 mm.	35 €
LMX442	STANDARD SHAFT MC	Standard shaft for MC with vanes, bail & internal flange.	65 €
LMX443	ACH-MC	Adjustable Core Holder for rewinding on cores between 25 and 101 mm diameter. With inner flange.	160 €
LMX162	BAIL-MC	Standard on MC-10 & MC-10+. For rewinding on the shaft without using an empty core (coreless).	15 €



MC-11 with optional APG



MC-10

LABEL REWINDERS

HEAVY-DUTY REWINDERS CAT-3 / CAT-40G/V2

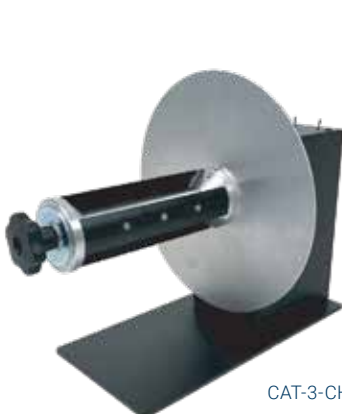
"CAT" (Constant Adjustable Torque™) has made these quiet, easy-to-use rewinders the industry standard. With various core sizes, label widths, roll diameters and options to choose from, there is a rewinder to fit any job you may have.

- ✓ Small footprint to fit on any desk
- ✓ Easy setup: attach the labels to the take-up core and ready to start
- ✓ Speed up to 125 cm/sec to work with the fastest barcode printers available on the market
- ✓ Bi-Directional for internal & external winding
- ✓ Large capacity for roll diameters up to 400 mm

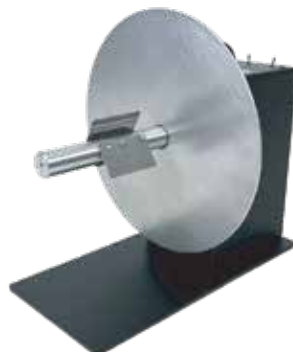


FEATURES

- Settings for Torque/speed and direction via the Control Panel
- CAT-3 with custom build heavy-duty & silent motor
Max. Speed: 125 cm/sec at the beginning of a 76 mm core roll
- CAT-40G with powerfull Gear-motor for high torque.
Max. Speed: 38 cm/sec at the beginning of a 76 mm core roll
- The CAT-3-Standard has a vane-style core Holder
- The CAT-3-ACH employs an adjustable core holder enabling the use of varying core sizes, for maximum flexibility
- The CAT-3-CHUCK includes a quick-locking "Quick-Chuck" core chuck permitting the fastest loading and unloading of cores and label rolls
- CHUCK/STANDARD/10-INCHES models come standard for using cores in 76 mm. On request available in 38/40/44/50/70 mm. See page 37 & 38 "Chucks and Vanes" for item configuration



CAT-3-CHUCK



CAT-3-STANDARD



CAT-1-INCH

HEAVY-DUTY-CAT

CAT-3/40-MODELS

P/N	MODEL	DESCRIPTION	MAX LABEL WIDTH	MAX ROLL DIAM	MAX WEIGHT	PRICE
LMR004	CAT-3-STANDARD	Standard for 76 mm cores (38/40/44/50/70/100 mm available). Size W x D x H: 300 x 350 x 320 mm	155 mm	300 mm	8 KG	725 €
LMR005	CAT-3-ACH	Adjustable Core Holder for using any core diameter between 25 & 101 mm. Size W x D x H: 280 x 310 x 310 mm	155 mm	280 mm	7 KG	790 €
LMR006	CAT-3-CHUCK	Easy-Loading Quick-Chuck for 76 mm cores (38/40/44/70 mm available). Size W x D x H: 300 x 385 x 320 mm	170 mm	300 mm	10 KG	950 €
LMR006/ LMX484	CAT-3-CHUCK	Easy-Loading Quick-Chuck for 76 mm cores. Size W x D x H: 300 x 435 x 320 mm	220 mm	300 mm	10 KG	1030 €
LMR006/ LMX485	CAT-3-CHUCK	Easy-Loading Quick-Chuck for 76 mm cores. Size W x D x H: 300 x 485 x 320 mm	270 mm	300 mm	10 KG	1100 €
LMR007	CAT-3-10-INCHES	Standard for 76 mm cores (38/40/44/50/70 mm available). Size W x D x H: 300 x 455 x 320 mm	255 mm	300 mm	10 KG	805 €
LMR008	CAT-3-1-INCH	For 25,4 mm cores Size W x D x H: 220 x 350 x 280 mm	155 mm	220 mm	8 KG	740 €
LMR009	CAT-40G/V2	Easy-Loading Quick-Chuck for 76 mm cores (38/40/44/70/100 mm available). Size W x D x H: 400 x 450 x 460 mm	170 mm (optional 220 & 270 mm)	400 mm	14 KG	1545 €

CAT-3/40-OPTIONS

P/N	MODEL	DESCRIPTION	PRICE
LMX579	UNIVERSAL- ALIGNMENT PLATE	for any desktop Thermal Transfer printer.	85 €
LMX491	STANDARD SHAFT	Standard shaft with vanes, internal and external flanges.	115 €
LMX492	10" SHAFT	10-Inches shaft with vanes, internal and external flanges.	150 €
LMX500	ACH-CAT	Adjustable Core Holder for any core size from 25 to 101 mm. With inner flange.	160 €
LMX501	BAIL STD	For rewind on shaft. No core is needed.	20 €
LMX502	BAIL 10"	For rewind on 10-inches shaft. No core is needed.	25 €
LMX472	FOOT SWITCH	To start and stop the unit.	95 €
LMX546	1' SHAFT	1 Inch shaft with vanes, internal and external flanges.	115 €
LMX567	Media guide short on bracket	for CAT-3, ACH & CHUCK models.	55 €
LMX568	Media guide long on bracket	for CAT-3, ACH & CHUCK models.	55 €
LMX604	Media guide long on bracket	for CAT-40/R16/XL, ACH & CHUCK models.	85 €
LMX567	Media guide short on bracket	for CAT-40/R16/XL, ACH & CHUCK models.	108,5 €

LABEL REWINDERS

UNIVERSAL & INTELLIGENT UNI-CAT

The UNI-CAT is the smartest and most “UNI-VERSATILE” rewinder/unwinder in the Labelmate product range ! With various core sizes, label widths, roll diameters and options to choose from, there is a rewinder/unwinder to fit any job you may have. The new UNI-CAT replaces all CAT-3-TA models (with Tension Arm) and CAT-4 models.

- ✓ Self-teaching to work as rewinder or unwinder
- ✓ Supports back-feed process for colour inkjet & tension sensitive printers
- ✓ Auto-Speed Adjustment to align with printer speed
- ✓ Speed up to 125 cm/sec to work with the fastest barcode printers available
- ✓ Bi-Directional for internal & external winding
- ✓ New maintenance free, soft-touch control panel with LED-Status-Indicators
- ✓ Standard with paper guide for straight and tight label rolls, no flanges needed



FEATURES

- New maintenance free, soft-touch control panel with LED-Status-Indicators
- Seamlessly detecting & following printer activity: rewinding, idle and unwinding
- Future Proof Design due to interchangeable shafts, depending your applications
- UNI-CAT-Standard has a Vane-style core Holder
- UNI-CAT-ACH employs an adjustable core holder enabling the use of varying core sizes, for maximum flexibility
- UNI-CAT-CHUCK includes a quick-locking “Quick-Chuck” permitting the fastest loading and unloading of cores and label rolls
- CHUCK/STANDARD/10-INCHES models come standard for using cores in 76 mm. On request available in 38/40/44/50/70 mm.
- See pages 37 & 38 “Chucks and Vanes” for item configuration
- All models come standard with the Adjustable Paper Guide for UNI-CAT, no external flanges required
- The UNI-CAT is a perfect companion for colour inkjet printers and industrial Thermal Transfer Printers

DIMENSIONS

- Standard model: W x D x H: 300 x 350 x 320 mm
- ACH- model: W x D x H: 280 x 310 x 310 mm
- CHUCK-model: W x D x H: 300 x 385 x 320 mm
- 10-INCHES model: W x D x H: 300 x 455 x 320 mm

UNIVERSAL UNI-CAT

UNI-CAT-MODELS

P/N	MODEL	DESCRIPTION	MAX LABEL WIDTH	MAX ROLL DIAM	MAX WEIGHT	PRICE
LMR042	UNI-CAT-STANDARD	Standard for 76 mm cores (38/40/44/50/70/100 mm available).	155 mm	300 mm	8 KG	865 €
LMR043	UNI-CAT-ACH	Adjustable Core Holder for using any core diameter between 25 & 101 mm.	155 mm	280 mm	7 KG	965 €
LMR045	UNI-CAT-10-INCHES	Standard for 76 mm cores (38/40/44/50/70 mm available).	255 mm	300 mm	10 KG	985 €
LMR046	UNI-CAT-1-INCH	For 25,4 mm cores.	155 mm	220 mm	8 KG	885 €
LMR044	UNI-CAT-CHUCK	Easy-Loading Quick- Chuck for 76 mm cores (38/40/44/70 mm available).	170 mm	300 mm	10 KG	1115 €
LMR044/ LMX484	UNI-CAT-CHUCK	Easy-Loading Quick- Chuck for 76 mm cores.	220 mm	300 mm	10 KG	1195 €
LMR044/ LMX485	UNI-CAT-CHUCK	Easy-Loading Quick- Chuck for 76 mm cores.	270 mm	300 mm	10 KG	1265 €
LMR047	UNI-CAT-R16	Easy-Loading Quick-Chuck for 76 mm cores and 400 mm rolls (38/40/44/70 mm available).	170 mm	400 mm	10 KG	1270 €
LMR049	UNI-CAT-XL	Easy-Loading Quick-Chuck for 76 mm cores and 400 mm rolls (38/40/44/70 mm available).	170 mm	400 mm	14 KG	1590 €
LMR049/ LMX484	UNI-CAT-XL	Easy-Loading Quick-Chuck for 76 mm cores and 400 mm rolls.	220 mm	400 mm	14KG	1690 €
LMR049/ LMX485	UNI-CAT-XL	Easy-Loading Quick-Chuck for 76 mm cores and 400 mm rolls.	270 mm	400 mm	14 KG	1760 €
LMR064	UNI-CAT-320	Extended Chuck 76 mm with supporting bracket (for Callisto Neuralabel) Alignment plate included.	320 mm	300 mm	10 KG	2190 €
LMR064/ XL	UNI-CAT-320-XL	Extended Chuck 76 mm with supporting bracket (for Callisto Neuralabel) Alignment plate included.	320 mm	400 mm	14 KG	2315 €



UNI-CAT-OPTIONS

P/N	DESCRIPTION	PRICE
LMX579	UNIVERSAL- ALIGNMENT PLATE for any desktop Thermal Transfer and Inkjet color printer.	85 €
LMX580	ALIGNMENT PLATE for EPSON C7500.	85 €
LMX602	ALIGNMENT PLATE for EPSON C6000/6500.	85 €
LMX566	ALIGNMENT PLATE for ASTRO-QL-300 and OKI PRO1040.	57 €
LMX577	ALIGNMENT PLATE for ASTRO QL-120.	40 €
LMX603	UNIVERSAL ALIGNMENT PLATE XL - for extra wide printers (Affinia/VIP/...).	95 €
LMX492	10-Inches shaft with vanes, internal and external flanges.	150 €
LMX500	Adjustable Core Holder for any core size from 25 to 101 mm.	160 €
LMX501	BAIL for rewinding on standard shaft. No core is needed.	20€
LMX502	For rewind on 10-inches shaft. No core is needed.	25 €
LMX546	1 Inch shaft with vanes, internal and external flanges.	115 €
LMX491	Standard shaft with vanes, internal and external flanges.	115 €



UNI-CAT-ACH



UNI-CAT-STANDARD



UNI-CAT-CHUCK / 270mm



UNI-CAT-10-INCHES



UNI-CAT-R16 / 170mm



UNI-CAT-320-XL

NEW TWIN-MATRIX

TWIN-MATRIX FOR BORDERLESS COLOUR PRINTING AND EASY MATRIX REMOVAL

The new TWIN-MATRIX is the smartest way to separate waste matrix from labels. Either as an off-line station combined with an unwinder or directly in-line with your (colour)label printer. The long tension arm creates a loop of labels to support the backfeeding process from your colour printer. With models in different sizes and orientation, there is a suitable TWIN-MATRIX for any printer model.

- ✓ Compact Footprint to fit on any desk
- ✓ Supports back-feed process for colour inkjet & tension sensitive printers
- ✓ Right to Left (R/L) edition for Epson Colorworks Series, TSC, Swift, DTM, etc
- ✓ Left to Right (L/R) edition for Memjet-based solutions like Affinia & VIP
- ✓ Speed up to 125cm/sec to work with the fastest printers available



FEATURES

- Tension-Arm in combination with Inductive Sensor Seamlessly detecting & following printer activity
- Includes 2 quick-locking "Quick-Chucks" permitting the fastest loading and unloading of cores and label rolls
- Rubber platen roller to keep media well tensioned
- CHUCK come standard for using cores in 76 mm, on request available in other dimensions
- Comes standard with Paper Guide for straight finished label rolls
- Dual-Motor design with separate Tension Control for the labels and the waste matrix

SPECIFICATIONS:

- Weight of the machine: 21 KG up to 24 KG depending on model
- Max. Label Roll Weight: 2 x 5 KG
- Max. Label Roll Diam: 220 mm
- Dimensions W x D x H: 40 x 40 x 50 cm
- Power Supply: INPUT 100-240V- 50-60Hz, Output 15V DC-4,6A

TWIN-MATRIX MODELS

P/N	MODEL	DESCRIPTION	MAX LABEL WIDTH	PRICE
LMR057	TWIN-MATRIX-6-R/L	Right to Left paper path, for colour printers (EPSON, TSC, Primera, OKI, ...).	170 mm	2290 €
LMR058	TWIN-MATRIX-6-L/R	Left to Right paper path, for colour printers based on Memjet engines (VIP, Affinia, ...).	170 mm	2290 €
LMR059	TWIN-MATRIX-8-R/L	Right to Left paper path, for colour printers (EPSON, TSC, Primera, OKI, ...).	220 mm	2490 €
LMR060	TWIN-MATRIX-8-L/R	Left to Right paper path, for colour printers based on Memjet engines (VIP, Affinia, ...).	220 mm	2490 €
LMR061	TWIN-MATRIX-6-DELUXE-STATION	Complete off-line station, including TWIN-MATRIX-6-INCH, Unwinder UCAT-1-CHUCK, Alignment-Plate.	170 mm	3190 €
LMR062	TWIN-MATRIX-8-DELUXE-STATION	Complete off-line station, including TWIN-MATRIX-8-INCH, Unwinder UCAT-1-CHUCK, Alignment-Plate.	220 mm	3390 €



TWIN-MATRIX-OPTIONS

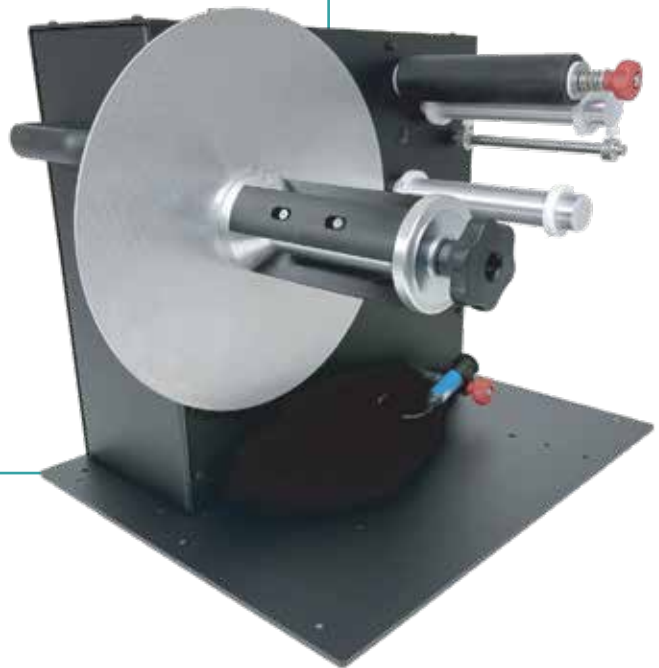
P/N	DESCRIPTION	PRICE
LMX579	UNIVERSAL- ALIGNMENT PLATE for any desktop Thermal Transfer and Inkjet color printer.	85 €
LMX580	ALIGNMENT PLATE for EPSON C7500.	85 €
LMX566	ALIGNMENT PLATE for ASTRO-QL-300 and OKI PRO1040.	57 €
LMX577	ALIGNMENT PLATE for ASTRO QL-120.	40 €

LABEL REWINDERS

ZCAT-6/8/10 ZERO TENSION LOOP CONTROLLED LABEL REWINDER

The **ZCAT** Rewinder is the ideal solution for colour inkjet printers that back feed, as well as for customers with a strong focus on print quality (300 or 600dpi applications) and RFID printing applications.

- ✓ A free-hanging "loop" of label stock is created between the printer and the Tensioning Roller thereby eliminating all tension on the paper path & printer
- ✓ A special chassis-mounted adjustable sensor starts and stops the Rewinder based on the optimum depth of the loop
- ✓ Large capacity for roll diameters up to 300 mm
- ✓ Rubber Platen Roller provides adjustable tension for tight finished rolls
- ✓ Handles labels up to 170, 220 or 255 mm wide
- ✓ Available in left to right or right to left rewind direction
- ✓ Speed up to 125 cm/sec, supporting fastest printers on the market



FEATURES

- Adjustable sensor supports customising the depth of the loop and distance between rewinder and printer
- Adjustable Tension on the Rubber Platen Roller provides perfect and tight finished label rolls. This makes the ZCAT Highly recommended for customers using label rolls afterwards in automatic label applicators
- Comes with a quick-locking "Quick-Chuck" permitting the fastest loading and unloading of cores and label rolls
- Comes standard for using cores in 76 mm. On request available in 38/40/44/70/100 mm. See page 33 "chucks and vanes" for item configuration
- Settings for Torque/speed and direction via the Control Panel
- ZCAT with custom build heavy-duty & silent motor. Max. Speed: 125 cm/sec at the beginning of a 76 mm core roll
- Bi-directional for internal & external rewinding
- Max Label Roll weight: 10 KG

DIMENSIONS

- W x D x H: 483 x 381 x 400 mm
- Shipping Weight: 36 KG, shipped in wooden crates

ZERO-TENSION ZCAT

ZCAT-MODELS

P/N	MODEL	DESCRIPTION	MAX LABEL WIDTH	PRICE
LMR035	ZCAT-6-R/L	Right to Left paper path, for Thermal Transfer printers and colour printers (EPSON, TSC, Primera, OKI, ...).	170 mm	1445 €
LMR036	ZCAT-6-L/R	Left to Right paper path, for colour printers based on Memjet engines (VIP, Affinia, ...).	170 mm	1445 €
LMR037	ZCAT-8-R/L	Right to Left paper path, for Thermal Transfer printers and colour printers (EPSON, TSC, Primera, OKI, ...).	220 mm	1515 €
LMR038	ZCAT-8-L/R	Left to Right paper path, for colour printers based on Memjet engines (VIP, Affinia, ...).	220 mm	1515 €
LMR039	ZCAT-10-R/L	Right to Left paper path, for Thermal Transfer printers and colour printers (EPSON, TSC, Primera, OKI, ...).	255 mm	1665 €
LMR040	ZCAT-10-L/R	Left to Right paper path, for colour printers based on Memjet engines (VIP, Affinia, ...).	255 mm	1665 €



ZCAT-R/L-model



ZCAT-L/R-model

ZCAT-OPTIONS

P/N	MODEL	DESCRIPTION	PRICE
LMX579	UNIVERSAL- ALIGNMENT PLATE for any desktop Thermal Transfer and Inkjet color printer.		85 €
LMX580	ALIGNMENT PLATE for EPSON C7500.		85 €
LMX508	Optional 300 mm outer Flange for Quick-Chuck 76 mm.		95 €
LMX549	PC-4	Optional 6-digit pre-set counter. Allows to count labels or show instantaneous web speed. Factory installed.	389 €
LMX553	6" PAPER LOOP GUIDE	6" Paper-loop-guide: for guiding thick or curling media into a loop for ZCAT 6.	45 €
LMX554	8" PAPER LOOP GUIDE	8" Paper-loop-guide: for guiding thick or curling media into a loop for ZCAT 8/10.	55 €

DUAL SPINDLE STATION

TWIN-CAT-2 DUAL SPINDLE UNWIND/REWIND STATIONS

The Dual Spindle TWIN-CAT-2 is a fast and easy way to deliver label rolls the way you want them! With various label widths and core diameters along with Inspection and Counting options, this all-in-one rewind/unwind Station is the ideal solution for in-house label roll conditioning.

- ✓ Inside wound to outside wound applications
- ✓ Reverse the order of serialized labels
- ✓ Rewind labels on a different core size
- ✓ Wind small rolls of labels from larger ones
- ✓ Rewind a specific quantity of labels with the optional inspection and pre-set counter options



FEATURES

- 2 Powerful motors, Bi-Directional Unwinding & Rewinding
- 100+ possible configurations to handle any job
- Control Panel for setting direction & speed/torque for each spindle independently
- External Halt Control: Stop/start the unit with foot switch or other device
- Max. Speed: 125 cm/sec at the beginning of a 76 mm core roll
- Max Label Roll weight: 2 x 5 KG
- STANDARD/10-INCHES models come standard for using cores in 76 mm. On request available in 38/40/44/50/70/100 mm. See pages 37 & 38 "Chucks and Vanes" for item configuration

- STANDARD/1-INCH & 10-INCHES models come standard with inner & outer flanges. We recommend to add optional APG-CAT to the ACH, 1-INCH and CHUCK models with other diameter than 76 mm
- Roll Diameter: 2 x 220 mm

DIMENSIONS

- W x D x H: 180 x 370 x 470 mm
- Shipping Weight: 20 KG, depending on configuration and options

TWIN-CAT-2

TWIN-CAT-2-BASE-UNIT

P/N	MODEL	DESCRIPTION	PRICE
LMR016	TWIN-CAT-2 BASE-UNIT	TWIN-CAT-2, Base-Unit without any core holder	1095 €

SELECT 2 CORE HOLDERS

P/N	MODEL	DESCRIPTION	MAX LABEL WIDTH	PRICE
LMX460	1-INCH	25,4 mm (1") standard shaft and flanges.	155 mm	75 €
LMX461	STANDARD	Standard shaft with vanes and flanges.	155 mm	75 €
LMX462	10-INCHES	Standard shaft with vanes and flanges.	255 mm	150 €
LMX463	ACH-TWIN	Adjustable core holder shaft for cores from 25 to 101 mm. Cannot be mixed with another type.	155 mm	180 €
LMX464	CHUCK – C-76170	Quick-Chuck shaft in 76 mm core diameter and 170 mm length and inner flange.	170 mm	310 €
LMX465	CHUCK – C-76220	Quick-Chuck shaft in 76 mm core diameter and 220 mm length and inner flange.	220 mm	395 €
LMX466	CHUCK – C-76270	Quick-Chuck shaft in 76 mm core diameter and 270 mm length and flanges.	270 mm	460 €
LMX600	CHUCK – C-38170	Quick-Chuck shaft in 38 mm core diameter and 170 mm length and inner flange.	170 mm	310 €
LMX601	CHUCK – C-40170	Quick-Chuck shaft in 40 mm core diameter and 170 mm length and inner flange.	170 mm	310 €
LMX557	CHUCK – C-44170	Quick-Chuck shaft in 44 mm core diameter and 170 mm length and inner flange.	170 mm	310 €



TWIN-CAT-2-OPTIONS

P/N	MODEL	DESCRIPTION	PRICE
LMX470	INSP-1	Bracket with 2 rollers, mounted on the side of the TWIN-CAT. Select this option for Matrix Removal on OKI-type colour printer.	150 €
LMX472	FOOT SWITCH	Foot Switch to start/stop the TWIN-CAT-2.	95 €
LMX473	OUTER FLANGE	220 mm outer flange for Quick-Chuck in 76 mm.	43 €

LABEL UNWINDERS

Label unwinders provide a convenient way to **manage your supply roll of labels** as it feeds into a printer. You can use larger rolls of labels to minimize your unit label cost. The supply roll of labels does not have to be refreshed as often, **saving time and adding convenience**. External label rolls are always visible, making it easy to monitor the status of your label supply.

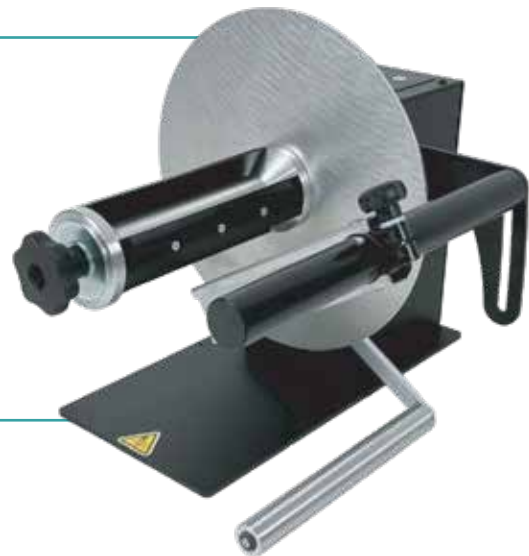
UNPOWERED UNWINDERS UCAT-S, UCAT-S-MINI & UCAT-1



- ✓ UCAT-S (Mini) features a wearless brake to stop the roll at end of job
- ✓ UCAT-1 features adjustable speed/braking to align with printer

POWERED UNWINDER/REWINDER UNI-CAT

- ✓ Self-teaching to work as rewinder or unwinder
- ✓ Supports back-feed process for colour inkjet & tension sensitive printers
- ✓ Auto-Speed Adjustment to align with printer speed, bi-Directional for internal & external winding



DIMENSIONS

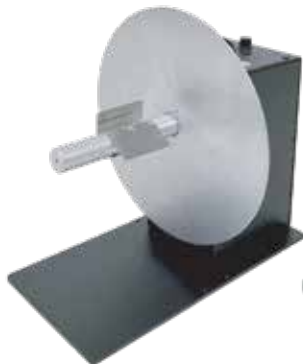
- | | | |
|-------------------------|-------------------------------|--|
| • UCAT-S | W x D x H: 300 x 365 x 320 mm | • STANDARD/10-INCHES/Chuck models come standard for using cores in 76 mm. On request available in 38/40/44/50/70 mm. See pages 37 & 38 "Chucks and Vanes" for item configuration |
| • UCAT-S-MINI | W x D x H: 220 x 305 x 195 mm | |
| • Standard & ACH models | W x D x H: 300 x 350 x 320 mm | |
| • Chuck models | W x D x H: 300 x 385 x 320 mm | |
| • 10-INCHES | W x D x H: 300 x 455 x 320 mm | |

UNPOWERED UNWINDERS

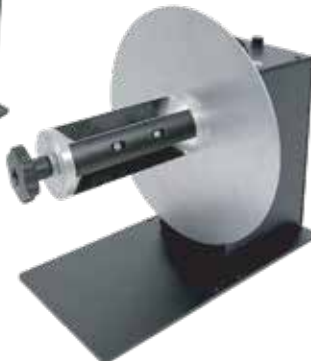
P/N	MODEL	DESCRIPTION	MAX LABEL WIDTH	MAX ROLL DIAM	MAX WEIGHT	PRICE
LMU014	UCAT-S-MINI	Unwinder with mechanical brake. Standard for 76 mm cores (38/40/44/70/100 mm available).	125 mm	220 mm	4.5 KG	225 €
LMU001	UCAT-S	Unwinder with adjustable mechanical brake. Standard for 76 mm cores (38/40/44/50/70/100 mm available).	155 mm	300 mm	8 KG	275 €
LMU002	UCAT-1-STANDARD	Self-Powered-Adjustable Speed, Proportional Frictionless Braking. Standard for 76 mm cores (38/40/44/50/70/100 mm available).	155 mm	300 mm	8 KG	545 €
LMU003	UCAT-1-ACH	Self-Powered-Adjustable Speed, Proportional Frictionless Braking. Adjustable Core Holder for using any core diameter between 25 & 101 mm.	155 mm	280 mm	7 KG	607 €
LMU004	UCAT-1-CHUCK	Self-Powered-Adjustable Speed, Proportional Frictionless Braking. Easy-Loading Quick-Chuck for 76 mm cores (38/40/44/70/100 mm available).	170 (optional 220 & 270) mm	300 mm	10 KG	789 €
LMU005	UCAT-1-10-INCHES	Self-Powered-Adjustable Speed, Proportional Frictionless Braking. Standard for 76 mm cores (38/40/44/50/70/100 mm available).	255 mm	300 mm	10 KG	620 €
LMU006	UCAT-1-1-INCH	Self-Powered-Adjustable Speed, Proportional Frictionless Braking. For 25,4 mm (1") cores.	155 mm	220 mm	8 KG	545 €



UCAT-1-ACH



UCAT-1-STANDARD



UCAT-1-CHUCK



UCAT-S-MINI

LABEL UNWINDERS

POWERED UNWINDERS/REWINDERS UNI-CAT

P/N	MODEL	DESCRIPTION	MAX LABEL WIDTH	MAX ROLL DIAM	MAX WEIGHT	PRICE
-----	-------	-------------	-----------------	---------------	------------	-------

see page 16 for all UNI-CAT rewinder/unwinder models

OPTIONS UCAT-1 & UNI-CAT

P/N	MODEL	DESCRIPTION	PRICE
LMX457	R-16	Option available on UCAT-1-STANDARD and UCAT-1-CHUCK to accept rolls up to 400 mm in diameter. Factory installed.	115 €
LMX579		UNIVERSAL- ALIGNMENT PLATE for any desktop Thermal Transfer and Inkjet color printer.	85 €
LMX491	STANDARD SHAFT	Standard shaft for UCAT-1 & UNI-CAT with vanes, internal and external flanges.	115 €
LMX546	1" SHAFT	1-Inch shaft for UCAT-1 & UNI-CAT with vanes, internal and external flanges.	115 €
LMX492	10" -SHAFT	10-Inches shaft for UCAT-1 & UNI-CAT with vanes, internal and external flanges.	150 €
LMX500	ACH-SHAFT	Adjustable Core Holder for any core size from 25 to 101 mm in diameter. With inner flange.	160 €

NEW ZERO-TENSION UNWINDER



- ✓ A free-hanging "loop" of label stock is created between the printer and the unwinder, thereby eliminating all tension on the paper path and printer.
- ✓ A Special chassis-mounted adjustable sensor starts and stops the unwinder based on the optimum depth of the loop.

POWERED UNWINDERS/REWINDERS UNI-CAT

P/N	MODEL	DESCRIPTION	MAX LABEL WIDTH	MAX ROLL DIAM	MAX WEIGHT	PRICE
LMU016	UCAT-LC-XL	Powered label unwinder with zero tension loop control.	170 mm	400 mm	14 KG	1760 €

SLITTING SOLUTIONS

Label slitters are a quick and easy way to produce much faster high quantities of smaller labels as you can print **multiple-across label rolls** and then slit them into separate, individual label rolls. Labelmate offers complete “stand-alone” slitting stations including unwinder, slitter and rewinder) as “in-line” solutions that can be placed at the output of any label printer.

UNIVERSAL LABEL SLITTER & STATION

- For media width up to 255 mm
- Slit-Deluxe-Station: Including all devices

- ✓ Reduce drastically total printing cost (printer head lifetime and ribbon usage)
- ✓ Perfect solution for slitting and rewinding narrow labels
- ✓ Up to 5 labels across
- ✓ Can be used in combination with:
 - A barcode printer and a rewinder (inline)
 - A rewinder & an unwinder (offline)



LABEL SLITTERS-STATIONS-OPTIONS

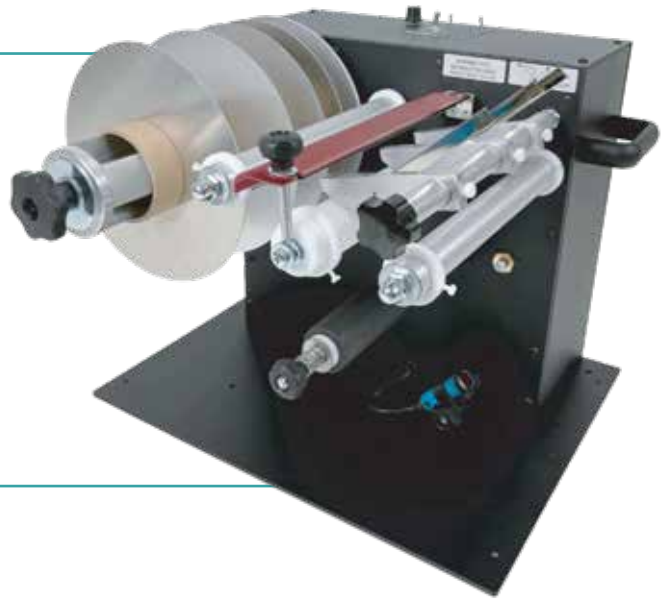
P/N	MODEL	DESCRIPTION	LABEL WIDTH	PRICE
LMS010	UNIVERSAL SLITTER	Universal Label Slitter, including 2 Blade Holders with Long Service Life Ceramic blades Requires a CAT-3-CHUCK (270) Size: W x D x H: 355 x 280 x 250 mm.	255 mm	630 €
LMS005	SLIT-DELUXE-STATION	Pack Includes: UCAT-1-10"Unwinder; - Universal Slitter; - 2 Blade Holders with blades; - CAT-3-CHUCK (270) Rewinder; - 3 Aluminium Separator Plates (220mm diameter); - 15V Power Supply; - alignment plate.	255 mm	2495€
LMX621	Additional blade holder with Long Service Life Ceramic blade.			154 €
LMX622	Spare ceramic blade.			64 €

SLITTING SOLUTIONS

SR-6/10 LABEL SLITTER & REWINDER COMBINATION

- SR-6: for media width up to 170 mm
- SR-10: for media width up to 255 mm

- ✓ Zero-Tension-Loop-Design, supporting backfeeding process from colour inkjet printers
- ✓ Large capacity roll diameters up to 220 mm
- ✓ Easy setup and flexible configuration (add and remove blades as required)



SR-6/10 LABEL SLITTER & REWINDER COMBINATION

P/N	MODEL	DESCRIPTION	LABEL WIDTH	PRICE
LMS006	SR-6-R/L	With easy-loading quick-chuck 76 mm, 2 blades, 2 ALU separator plates and outer/inner flanges included (220 mm). Roll diam: 220 mm Rewind direction: Right to left. Size: W x D x H: 483 x 381 x 400 mm	170 mm	1815 €
LMS007	SR-6-L/R	With easy-loading quick-chuck 76 mm, 2 blades, 2 ALU separator plates and outer/inner flanges included (220 mm). Roll diam: 220 mm Rewind direction: Left to Right. Size: W x D x H: 483 x 381 x 400 mm	170 mm	1815 €
LMS008	SR-10-R/L	With easy-loading quick-chuck 76 mm, 3 blades, 3 ALU separator plates and outer/inner flanges included (220 mm). Roll Diam: 220 mm Rewind direction: Right to left. Size: W x D x H: 483 x 381 x 400 mm	255 mm	2155 €
LMS009	SR-10-L/R	With easy-loading quick-chuck 76 mm, 3 blades, 3 ALU separator plates and outer/inner flanges included (220 mm). Roll Diam: 220 mm Rewind direction: Left to Right. Size: W x D x H: 483 x 381 x 400 mm	255 mm	2155 €

OPTIONS SR-LABEL SLITTERS

P/N	MODEL	DESCRIPTION	PRICE
LMX549	PC-4	Pre-set Counter for all SR-models. Allows to count labels or show instantaneous web speed. Factory installed.	389 €
LMX515	BH-1	Additional blade holder assembly. Includes precision high-speed blade.	35 €
LMX516	HSB-10	10 precision high-speed blades for slitters.	20 €



Blade-Holder BH-1



Separator plates

LABEL SEPARATOR PLATES FOR SLITTERS

P/N	MODEL	DESCRIPTION	MATERIAL	PRICE
LMX518	SP-25-220	220 mm diameter for 25 mm cores.	Aluminium	25 €
LMX520	SP-38-220	220 mm diameter for 38 mm cores.	Aluminium	25 €
LMX522	SP-40-220	220 mm diameter for 40 mm cores.	Aluminium	25 €
LMX524	SP-40-300	300 mm diameter for 40 mm cores.	Aluminium	35 €
LMX525	SP-44-220	220 mm diameter for 44 mm cores.	Aluminium	25 €
LMX527	SP-70-220	220 mm diameter for 70 mm cores.	Aluminium	25 €
LMX529	SP-76-220	220 mm diameter for 76 mm cores.	Aluminium	25 €
LMX531	SP-76-300	300 mm diameter for 76 mm cores.	Aluminium	35 €
LMX532	SP-76-400	400 mm diameter for 76 mm cores.	Aluminium	35 €
LMX533	SP-ACH-220	220 mm diameter for Adjustable Core Holders.	Aluminium	25 €
LMX535	SP-ACH-300	300 mm diameter for Adjustable Core Holders.	Aluminium	35 €

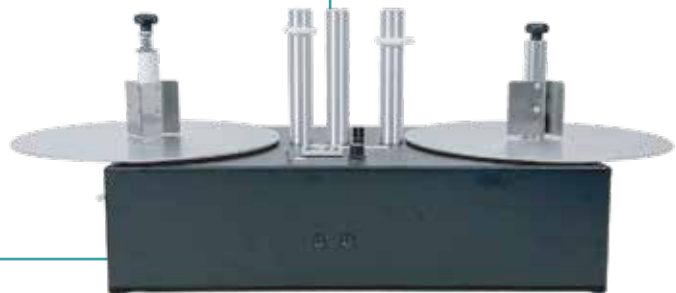
COUNTING SOLUTIONS

Label counters provide a quick and easy way to count the **number of labels on a roll**.

Off-Line counting can be done with either a **counting package** or a self contained **reel-to-reel unit**. Both units allow you to count the number of labels on a given roll, make large rolls of labels into smaller ones, change the direction of the labels coming off the roll or change to a different core size.

RRC-330 REEL-TO-REEL COUNTING STATION

- ✓ Stand-alone counting stations with pre-set counter functionality
- ✓ Accepts rolls with a diameter up to 330 mm
- ✓ Adjustable Tension setting on the unwind shaft for reliable counting and tight rolls
- ✓ Optional delivered with an ultrasonic sensor for transparent and dark labels
- ✓ Take-up shaft can be the Adjustable Core Holder (ACH) or Quick-Chuck



RRC-330-STD

FEATURES

- Designed for counting labels with a maximum width of 152 mm.
- 1 Powerful motor, the RRC-units are NOT Bi-Directional
- Max. Speed: 72 cm/sec at the beginning of a 76 mm core roll, 235 cm/sec at the end of a 330 mm roll
- Max Label Roll weight: 7 KG
- The STANDARD take-up shaft is a "Quick-Change" shaft to support fast changing of core holder diameter. It comes standard for using cores in 40 mm and 76 mm. On request available in 38/44/50/70/100 mm. See page 33 "chucks and vanes" for item configuration.
- The -ACH take-up shaft employs an adjustable core holder enabling the use of core sizes between 25 and 101 mm
- The CHUCK take-up shaft comes with a "Quick-Chuck" for cores in 76 mm

DIMENSIONS

- W x D x H: 830 x 330 x 330 mm
- Shipping Weight: 26 KG, depending on configuration and options

RRC-330

RRC-330-COUNTING STATIONS

P/N	MODEL	DESCRIPTION	PRICE
LMC001	RRC-330-STANDARD	Reel-to-Reel Counting Station with Standard Take-up shaft. Unwind and rewind on cores of 40 & 76 mm. (other diameters available on demand: 38/44/50/70/100 mm).	1695 €
LMC002	RRC-330-ACH	Reel-to-Reel Counting Station with Adjustable Take-up shaft for rewinding on cores between 25 and 101 mm diameter.	1895 €
LMC010	RRC-330-CHUCK	Reel-to-Reel Counting Station with Quick-Chuck take-up shaft for rewinding on cores of 76 mm (other diameters available on demand), max label width 170 mm .	1995 €
LMC010/ LMX484	RRC-330-CHUCK-220	Reel-to-Reel Counting Station with Quick-Chuck take-up shaft for rewinding on cores of 76 mm (other diameters available on demand), max label width 220 mm .	2295 €
LMC003	RRC-330-U-STANDARD	Standard model with Ultrasonic Sensor mounted on adjustable bracket. For counting transparent, black and special shaped labels.	2595 €
LMC004	RRC-330-U-ACH	ACH model with Ultrasonic Sensor mounted on adjustable bracket. For counting transparent, black and special shaped labels.	2795 €
LMC011	RRC-330-U-CHUCK	CHUCK model with Ultrasonic Sensor mounted on adjustable bracket. For counting transparent, black and special shaped labels.	2995 €

OPTIONS RRC-330

P/N	MODEL	DESCRIPTION	PRICE
LMX453	NO COUNTER	RRC unit without counter for basic reel-to-reel applications.	-200 €
LMX454	Quick-Change-Shaft	Complete take-up shaft with vanes (not available for unwinding).	60 €
LMX452	ENC-RRC	Encoder and special counter that can display both number of labels or the measured length of continuous material. This option is not available for U-models.	995 €



RRC-330-U-ACH



RRC-330-CHUCK

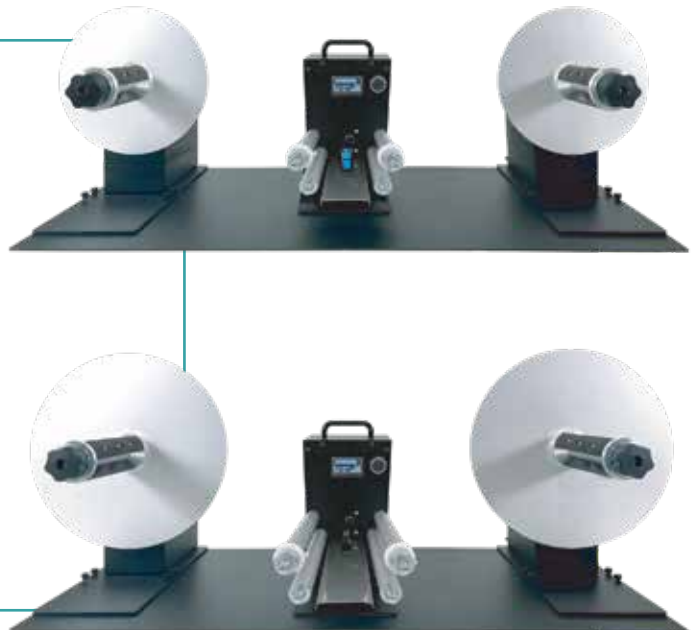


RRC-330-U-ST

COUNTING SOLUTIONS

Count-deluxe-stations provide the ideal off-line solution for counting heavy rolls of labels. With these systems, you can verify the number of labels on a roll, divide large rolls into smaller rolls using the preset count/stop feature, and re-tension loose rolls. You can also rewind in both directions (left-to-right and right-to-left) and change internal/external wound orientation from your labels.

- ✓ Variable speed control
- ✓ Adjustable Tension setting on the unwind shaft for reliable counting and tight rolls
- ✓ Bi-directional
- ✓ Pre-set counter function stops the rewinder at the requested quantity
- ✓ U-models with high-end Ultrasonic sensor for transparent and special shaped labels
- ✓ XL-models for rolls up to 400 mm diameter



FEATURES

- Designed for counting labels with a maximum width of 170 mm (COUNT-100) or 255 mm (COUNT-200)
- 2 Powerful motors: reverse your label roll after counting with the click of a switch
- External Flanges in aluminium ensure straight and tight finished label rolls
- Devices mounted on a solid base-plate for perfect alignment
- MAX weight of 10 KG on all Count Stations with max 300 mm diameter rolls
- MAX weight of 14 KG on all XL-models
- MAX Speed: 125 cm/sec at the beginning of a 76 mm core roll
- The take-up shafts come with a "Quick-Chuck" for cores in 76 mm
- Other optional Quick-Chuck core sizes on the COUNT-100 models: 38, 40, 44 and 70 mm



Counter



New User Interface

COUNT-DELUXE-STATIONS

P/N	MODEL	DESCRIPTION	MAX LABEL WIDTH	MAX ROLL WEIGHT/ DIAM	PRICE
LMC008	COUNT-100-DELUXE	Bi-directional label-counter, for rolls up to 300 mm, regular labels with gap or blackmark only.	170 mm	10 KG/ 300 mm	3490 €
LMC035	COUNT-100-U-DELUXE	Bi-directional label-counter, for rolls up to 300 mm and Ultrasonic sensor to count all labels including transparent.	170 mm	10 KG/ 300 mm	3990 €
LMC036	COUNT-100-DELUXE-XL	Bi-directional label-counter, for rolls up to 400 mm, regular labels with gap or blackmark only.	170 mm	14 KG/ 400 mm	3990 €
LMC037	COUNT-100-U-DELUXE-XL	Bi-directional label-counter, for rolls up to 400 mm and Ultrasonic sensor to count all labels including transparent.	170 mm	14 KG/ 400 mm	4490 €
LMC038	COUNT-200-DELUXE	Bi-directional label-counter, for rolls up to 300 mm, regular labels with gap or blackmark only.	255 mm	10 KG/ 300 mm	3990 €
LMC039	COUNT-200-U-DELUXE	Bi-directional label-counter, for rolls up to 300 mm and Ultrasonic sensor to count all labels including transparent.	255 mm	10 KG/ 300 mm	4490 €
LMC040	COUNT-200-DELUXE-XL	Bi-directional label-counter, for rolls up to 400 mm, regular labels with gap or blackmark only.	255 mm	14 KG/ 400 mm	4490 €
LMC041	COUNT-200-U-DELUXE-XL	Bi-directional label-counter, for rolls up to 400 mm and Ultrasonic sensor to count all labels including transparent.	255 mm	14 KG/400 mm	4990 €

COUNT-LABEL COUNTERS

P/N	MODEL	DESCRIPTION	MAX LABEL WIDTH	PRICE
LMC005/ V2	COUNT-100	NEW LED SCREEN Preset Counter with high-end Sensor. Counts single labels or pre-set batch quantity. Can Stop rewinder (CAT-3) when job is finished.	170 mm	1175 €
LMC006/ V2	COUNT-200	NEW LED SCREEN Preset Counter with high-end Sensor.Counts single labels or pre-set batch quantity. Can Stop rewinder (CAT-3) when job is finished.	255 mm	1295 €
LMC007/ V2	COUNT-100-U	NEW LED SCREEN Preset Counter with Ultrasonic Sensor mounted on adjustable bracket. For counting transparent, black and special shaped labels.	170 mm	2075 €
LMC012	COUNT-200-U	NEW LED SCREEN Preset Counter with Ultrasonic Sensor mounted on adjustable bracket. For counting transparent, black and special shaped labels.	255 mm	2195 €

PRINTING MECHANISM

The **LABELMATE PM-300 printer mechanism** is ready to be completed with the hardware of your choice. Some examples are inkjet-heads, laser-encoders, barcode verifiers or RFID encoders.

FEATURES FOR ALL PM-MODELS

- Designed for processing labels with a maximum width of 125 mm
- 1 Powerful motor, the PM-units are NOT Bi-Directional
- Maximum roll diameter: 300 mm
- Max Label Roll weight: 6 KG
- Secured DB-9 Print Head Connector
- Adjustable label guides
- 230VAC- 50-60Hz
- Label Sensor: Open Collector Output
- Come standard for using cores in 76 mm. On request available in 38/40/44/70/100 mm. See pages 37 & 38 "Chucks and Vanes" for item configuration.

PM-300-LS & PM-300-HS

- ✓ Add variable data like barcodes, dates, lot numbers etc at high speeds and extreme low cost by adding the inkjet-head of your choice
- ✓ Available with Ultrasonic sensor for transparent labels
- ✓ Built-In Encoder with a resolution of 0,041 mm
- ✓ Print Speed PM-300-LS: max 150 cm/sec
Roll of 28 cm takes 7 min
- ✓ Print Speed PM-300-HS: max 220cm/sec
Roll of 28 cm takes 4,5 min
- ✓ Actual Speed depending on performance of the chosen inkjet-head



LS & HS-MODELS

P/N	MODEL	DESCRIPTION	MAX SPEED	PRICE
LMP003	PM-300-LS	Reel to Reel Print Mechanism. Low Speed Model.	150 cm/sec	2250 €
LMP004	PM-300-HS	Reel to Reel Print Mechanism. High Speed Model.	235 cm/sec	2350 €
LMP007	PM-300-U-LS	LS-With Ultrasonic sensor for transparent labels.	150 cm/sec	3100 €
LMP008	PM-300-U-HS	HS-With Ultrasonic sensor for transparent labels.	235 cm/sec	3200 €

PM-300

PM-300-CS & PM-300-CS-STEP

- ✓ Operate at a Constant Adjustable Speed, with a tolerance of $\pm 5\%$
- ✓ Optional encoder with a resolution of 0,041 mm for high-precision jobs
- ✓ CS-STEP model has a "1 by 1" mode to stop after each label and advance to the next by a push-button or external command, perfect platform for RFID-encoding



CS & CS-STEP-MODELS

P/N	MODEL	DESCRIPTION	MAX SPEED	PRICE
LMP005	PM-300-CS	Reel to Reel Mechanism. Constant Speed Model	40 or 61 cm/sec	3590 €
LMP006	PM-300-CS-STEP	Constant Speed model with "1 by 1" mode	40 cm/sec	3690 €

PM-300-OPTIONS

P/N	MODEL	DESCRIPTION	PRICE
LMX454	Quick-Change Shaft	Complete take-up shaft with vanes. Not available for unwinding shaft.	60 €
LMX478	ENC PM-CS	Optional built-in encoder with resolution of 0,041 mm. For PM-300-CS & PM-300-CS-STEP only.	850 €
LMX474	PC-2	Optional 6-digit pre-set counter. Counts label batch size. Factory installed.	250 €
LMX475	PC-3	Dual function preset counter. Allows to count labels or show instantaneous web speed. Factory installed.	460 €
LMX477	WEB-BC	Mounting bracket and cable for Markoprint (Weber)™ X1-Jet print head.	165 €

DIMENSIONS

- W x D x H: 800 x 380 x 330 mm
- Shipping Weight: 26 KG, depending on configuration and options

SPARE POWER SUPPLIES

SPARE POWER SUPPLIES FOR LD/CAT/UNI-CAT/ZCAT/SR

P/N	MODEL	DESCRIPTION	PRICE
LMX537	PS-15V	Spare Power Supply 100-240V – 50Hz. Output: 15VDC – 4.33A. EU-Plug.	55 €
LMX537-UK	PS-15V-UK	Spare Power Supply 100-240V – 50Hz. Output: 15VDC – 4.33A. UK-Plug.	60 €
LMX056	PS-18V	High-Speed Power Supply to increase speed of Label Dispensers.	90 €
LMX505	PS-24V	Spare Power Supply 100-240V – 50Hz. Output: 24VDC – 5A. EU-Plug.	180 €
LMX505-UK	PS-24V-UK	Spare Power Supply 100-240V – 50Hz. Output: 24VDC – 5A. UK-Plug.	180 €

SPARE POWER SUPPLIES FOR MC-10/MC-11 (+)

P/N	MODEL	DESCRIPTION	PRICE
LMX550	PS-MC-15V (NEW)	Power Supply for MC/MC+ 15VDC, 1600mA. For rewinders with speed/torque control adjustment, sold as from 26.01.2018. EU-Plug.	40 €
LMX551	PS-MC-15V-UK (NEW)	Power Supply for MC/MC+ 15VDC, 1600mA. For rewinders with speed/torque control adjustment, sold as from 26.01.2018. UK-Plug.	40 €
LMX060	PS-MC	220-240V - 50Hz. Power Supply for MC with slide switch 3-12VDC EU-Plug. Old model.	40 €
LMX061	PS-MC-UK	220-240V - 50Hz. Power Supply for MC with slide switch 3-12VDC UK-Plug. Old model.	40 €

SPARE POWER SUPPLIES FOR TWIN-CAT-2/TWIN-MATRIX

P/N	MODEL	DESCRIPTION	PRICE
LMX504	PS-15V	TWIN-CAT Spare Power Supply 230V - 50Hz. Output 15VDC-4,6A EU-Plug.	120 €
LMX504-UK	PS-15V-UK	TWIN-CAT Spare Power Supply 230V - 50Hz. Output 15VDC-4,6A UK-Plug.	120 €

QUICK-CHUCKS & VANES

For Quick Loading & Unloading of label rolls, our precision & maintenance free “Quick-Chucks” Core Chucks support the mounting or removing of a label roll in seconds. For applications with heavy label rolls, regular roll changes & for holding multiple cores during slitting operations.

QUICK-CHUCKS

- ✓ For fast loading & unloading of label rolls
- ✓ Suitable for heavy label rolls
- ✓ Different sizes and diameters available for any application
- ✓ Fit onto 15,85 mm diameter motor shaft



VANES FOR FIN-STYLE CORE HOLDERS

- ✓ Stainless Steel Plates to mount on Standard and 10-INCHES core holders
- ✓ 76 mm Vanes are placed by default
- ✓ Available for all common core sizes: 38/40/44/50/70/76/100 mm
- ✓ Sets of 3 vanes, 2 sets required for 10-INCHES



QUICK-CHUCKS & FLANGES

P/N	MODEL	DIAMETER	WIDTH	PRICE
LMX479	C-38170	38 mm	170 mm	310 €
LMX480	C-40170	40 mm	170 mm	310 €
LMX481	C-44170	44 mm	170 mm	310 €
LMX482	C-70170	70 mm	170 mm	310 €
LMX483	C-76170	76 mm	170 mm	310 €
LMX484	C-76220	76 mm	220 mm	390 €
LMX485	C-76270	76 mm	270 mm	460 €
LMX506	220 mm outer Flange for "Quick-Chuck" 76 mm core diameter.			45 €
LMX144	220 mm inner Flange for "Quick-Chuck" 70, 76 & 100 mm core diameter.			25 €
LMX507	220 mm inner Flange for "Quick-Chuck" 38, 40 & 44 mm core diameter.			30 €
LMX508	300 mm outer Flange for "Quick-Chuck" 76 mm core diameter.			95 €
LMX509	300 mm inner Flange for "Quick-Chuck" 70, 76 & 100 mm core diameter.			35 €
LMX510	300 mm inner Flange for "Quick-Chuck" 38, 40 & 44 mm core diameter.			35 €
LMX511	400 mm outer Flange for "Quick-Chuck" 76 mm core diameter.			105 €
LMX512	400 mm inner Flange "Quick-Chuck" 76 mm core diameter.			60 €
LMX513	400 mm inner Flange for "Quick-Chuck" 38, 40 & 44 mm core diameter.			60 €

When you need a rewinder or unwinder with a quick-chuck other than 76 mm, you can refer to the P/N above.

Example: CAT-3-CHUCK with a 40 mm diameter chuck becomes LMR006/LMX480. Price based on difference with LMX483.

VANES

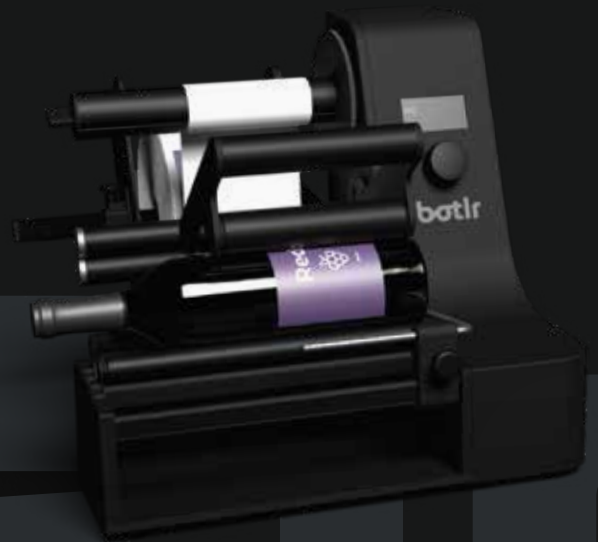
P/N	MODEL	DESCRIPTION	PRICE
LMX493	VANES 38	Set of 3 vanes (fins) for 38 mm cores.	15 €
LMX494	VANES 40	Set of 3 vanes (fins) for 40 mm cores.	15 €
LMX495	VANES 44	Set of 3 vanes (fins) for 44 mm cores.	15 €
LMX496	VANES 50	Set of 3 vanes (fins) for 50 mm cores.	15 €
LMX497	VANES 70	Set of 3 vanes (fins) for 70 mm cores.	15 €
LMX498	VANES 76	Set of 3 vanes (fins) for 76 mm cores.	15 €
LMX499	VANES 100	Set of 3 vanes (fins) for 100 mm cores.	30 €

When you need a rewinder or unwinder with vanes other than 76 mm, you can refer to the P/N above. Example: MC-10 with vanes 44 mm, becomes LMR001/LMX495. No additional cost.

Are you ready to evolve?

Meet Botlr. The most innovative labelling machine on the market.

Botlr stands for a variety of technological advancements.



+ Flexible

Label any container from 13mm up to 120mm in diameter, without any length restrictions.

+ Transparent labels

You can even apply transparent labels effortlessly.

+ Patented Technology

It's patented technology calculates your bottle diameter automatically.

+ Different shapes & sizes

Botlr supports different label shapes and sizes on the same label roll.

Good day
to you.
I'm your
Botlr.

Botlr is ready to use – no time wasted on setup. It ensures perfect label placement from the first to the last, automatically aligning the second label exactly 180° from the first. Botlr's extraordinary flexibility makes it possible to handle any cylindrical object, ranging from 13mm up to 120mm in diameter, without any length restrictions.

Up to
300 mm
label roll diameter

Up to
120 mm
bottle diameter

Labels up to
1.400 bottles
an hour

Why believe us?

When you can see for yourself.

If you want to know more about Botlr's usage and installation, you can watch our full video on our website botlr.com.



Go to botlr.com/how-it-works



Contact us for partnership info@botlr.com

**OUR ENTIRE TEAM
STAYS WITH YOU
ALL THE WAY.**

**DON'T HESITATE
TO CONTACT US:**

**TA Elektronikk AS
Hoveveien 48, 4306 SANDNES**

**992 85 818
www.taelektronikk.no
post@taelektronikk.no**

TA/ELEKTRONIKK

