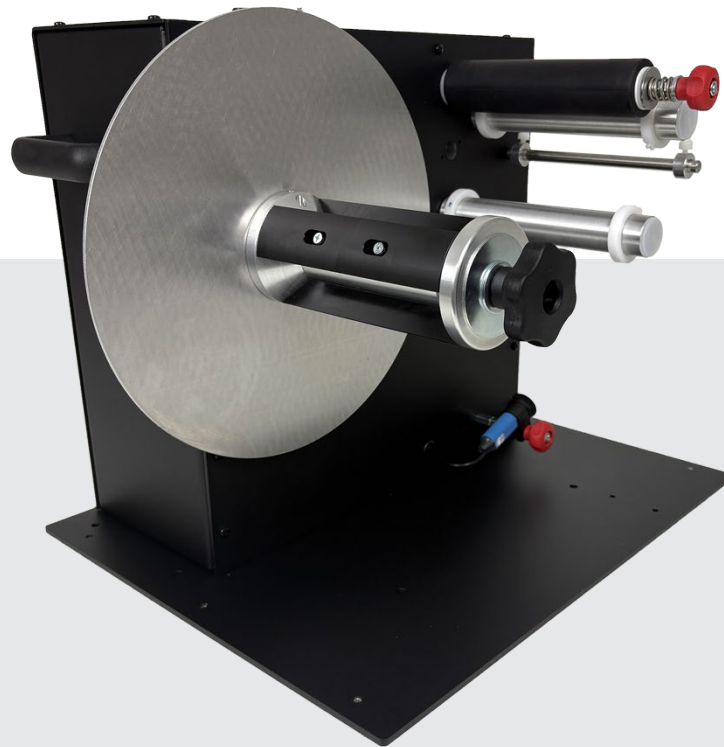




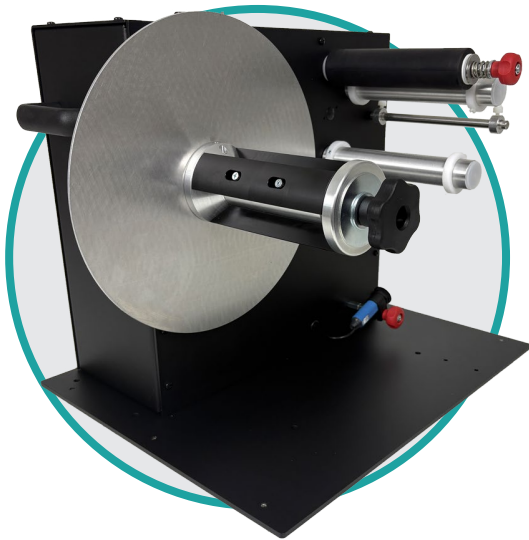
THE WORLD'S LEADING MANUFACTURER OF LABEL DISPENSERS,
REWINDERS, UNWINDERS, SLITTERS & COUNTING SOLUTIONS



LABEL REWINDER ZCAT-6/8/10

Label rewinder

The ideal solution for colour inkjet printers that back feed as well for customers with a strong focus on print quality (300 or 600 dpi applications) and RFID printing applications.



- ✓ A free-hanging "loop" of label stock is created between the printer and the Tensioning Roller thereby eliminating all tension on the paper path & printer
- ✓ A special chassis-mounted adjustable sensor starts and stops the Rewinder based on the optimum depth of the loop.
- ✓ Large capacity for roll diameters up to 300mm
- ✓ Rubber Platen Roller provides adjustable tension for tight finished rolls.
- ✓ Handles labels up to 170, 220 or 255mm wide
- ✓ Available in left to right or right to left rewind direction
- ✓ Speed up to 125cm/sec, supporting fastest printers on the market

FEATURES

- Adjustable sensor supports customising the depth of the loop and distance between rewinder and printer
- Adjustable Tension on the Rubber Platen Roller provides perfect and tight finished label rolls. This makes the ZCAT Highly recommended for customers using label rolls afterwards in automatic label applicators
- Comes with a quick-locking "Quick-Chuck" permitting the fastest loading and unloading of cores and label rolls
- Comes standard for using cores in 76mm. On request available in 38/40/44/70/100 mm. See page 33 "chucks and vanes" for item configuration
- Settings for Torque/speed and direction via the Control Panel
- ZCAT with custom build heavy-duty & silent motor. Max. Speed: 125 CM/SEC at the beginning of a 76 mm core roll
- Bi-directional for internal & external rewinding
- Max Label Roll weight: 9Kg

GENERAL

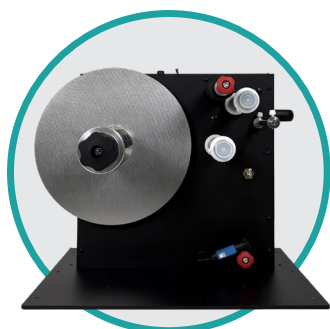
- Power Supply: 100-240VAC- 50Hz, Output 15VDC-4,33A
- Limited Warranty of 2 Years, extendable to 5 Years, 1 Year on the Power Supply

DIMENSIONS

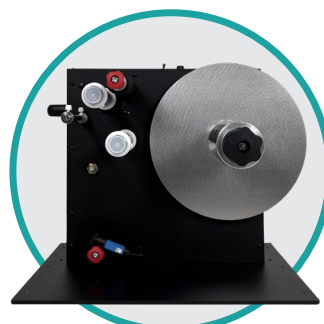
- W x D x H: 483 x 381 x 400 mm
- Shipping Weight: 36 KG, shipped in wooden crates

ZCAT-MODELS

P/N	MODEL	DESCRIPTION	MAX LABEL WIDTH
LMR035	ZCAT-6-R/L	Right to Left paper path, for Thermal Transfer printers and colour printers (EPSON, TSC, Primera,OKI,...)	170 mm
LMR036	ZCAT-6-L/R	Left to Right paper path, for colour printers based on Memjet engines (VIP, Affinia,...)	170 mm
LMR037	ZCAT-8-R/L	Right to Left paper path, for Thermal Transfer printers and colour printers (EPSON, TSC, Primera,OKI,...)	220 mm
LMR038	ZCAT-8-L/R	Left to Right paper path, for colour printers based on Memjet engines (VIP, Affinia,...)	220 mm
LMR039	ZCAT-10-R/L	Right to Left paper path, for Thermal Transfer printers and colour printers (EPSON, TSC, Primera,OKI,...)	255 mm
LMR040	ZCAT-10-L/R	Left to Right paper path, for colour printers based on Memjet engines (VIP, Affinia,...)	255 mm



ZCAT-R/L MODEL



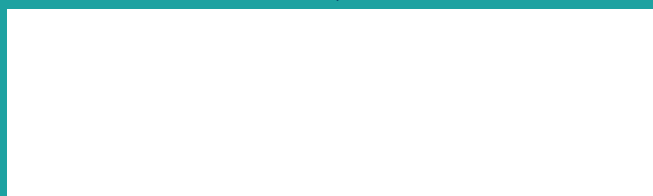
ZCAT-L/R MODEL

ZCAT-OPTIONS

P/N	MODEL	DESCRIPTION
LMX579	UNIVERSAL- ALIGNMENT PLATE for any desktop Thermal Transfer and Inkjet color printer	
LMX580	ALIGNMENT PLATE for EPSON C7500	
LMX508	Optional 300 mm outer Flange for Quick-Chuck 76 mm	
LMX549	PC-4	Optional 6-digit pre-set Counter. Allows to count labels or show instantaneous web speed. Factory installed.**
LMX553	6" PAPER LOOP GUIDE	6" Paper-loop-guide: for guiding thick or curling media into a loop for ZCAT 6
LMX554	8" PAPER LOOP GUIDE	8" Paper-loop-guide: for guiding thick or curling media into a loop for ZCAT8/10



Your local partner:



+32 2 375 69 60

brussels@labelmate.com

Bergensesteenweg 78
1651 Lot (Belgium)

www.labelmate.com