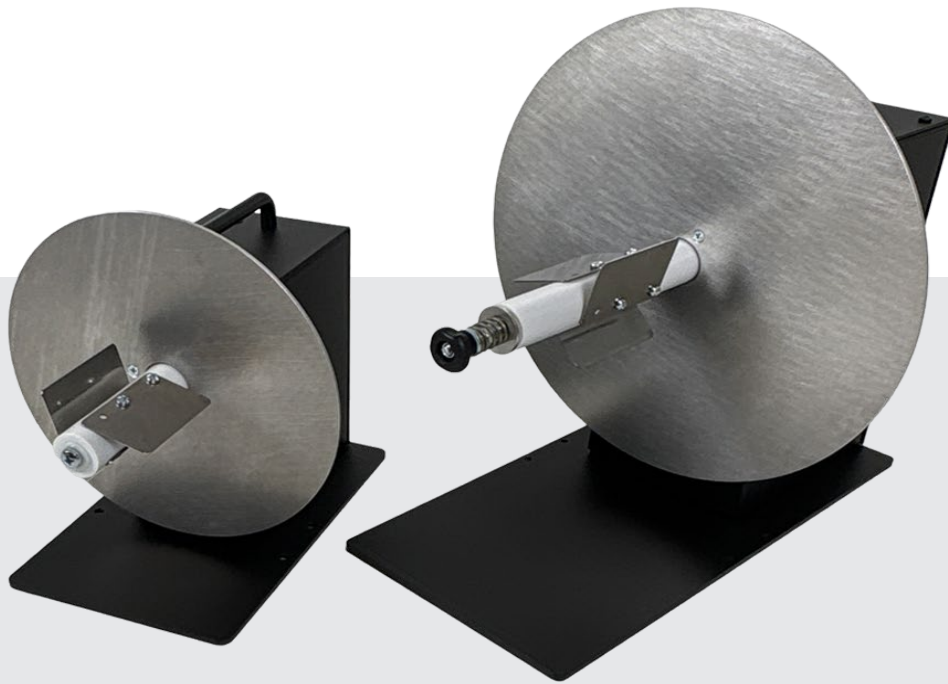




THE WORLD'S LEADING MANUFACTURER OF LABEL DISPENSERS,
REWINDERS, UNWINDERS, SLITTERS & COUNTING SOLUTIONS



UNPOWERED UNWINDERS

UCAT-S

UCAT-S-MINI

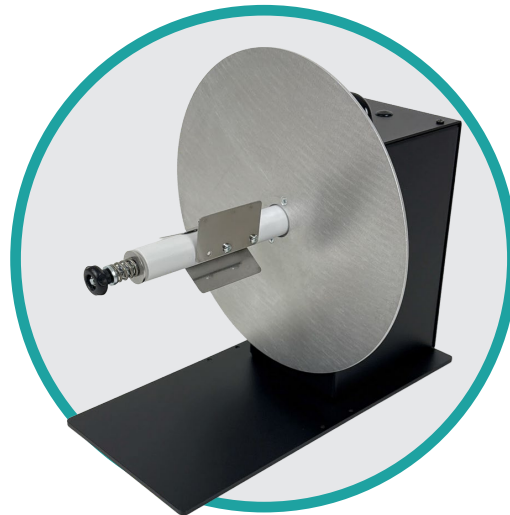
labelmate.com

Unpowered Label Unwinders

UCAT-S-MINI & UCAT-S

Label unwinders provide a convenient way to **manage your supply roll of labels** as it feeds into a printer. You can use larger rolls of labels to minimize your unit label cost. The supply roll of labels does not have to be refreshed as often, **saving time and adding convenience**. External label rolls are always visible, making it easy to monitor the status of your label supply.

- ✓ Small footprint to fit on any desk
- ✓ Easy setup: attach the labels to the take-up core and ready to start
- ✓ The UCAT-S-MINI features a wearless brake to stop the roll at the end of job
- ✓ The UCAT-S Features adjustable speed/braking to align with printer
- ✓ Large capacity for roll diameters up to 300mm



UCAT-S



UCAT-S-MINI

FEATURES UCAT-S-MINI

- Maximum Label Roll Weight: 4.5 KG
- Maximum Label Width: 125 mm
- Maximum Roll Diameter: 220 mm
- Maximum Speed: 50 CM/SEC at the beginning of a 76 mm core roll
- Dimensions : W x D x H : 220 x 305 x 195

FEATURES UCAT-S

- Maximum Label Roll Weight: 8 KG
- Maximum Label Width: 155 mm
- Maximum Roll Diameter: 300 mm
- Maximum Speed: same as printer
- Dimensions : W x D x H : 300 x 365 x 320mm

UNPOWERED UNWINDERS

| P/N | MODEL | DESCRIPTION | MAX LABEL WIDTH (mm) | MAX ROLL DIAM (mm) | MAX WEIGHT |
|--------|-------------|--|----------------------|--------------------|------------|
| LMU014 | UCAT-S-MINI | Unwinder with mechanical brake. Standard for 76mm cores (38/40/44/70/100mm available) | 125 | 220 | 4.5 KG |
| LMU001 | UCAT-S | Unwinder with Adjustable Brake. Standard for 76mm cores (38/40/44/50/70/100mm available) | 155 | 300 | 8 KG |

OPTIONS

| P/N | MODEL | DESCRIPTION |
|--------|--|-------------|
| LMX579 | UNIVERSAL- ALIGNMENT PLATE for any desktop Thermal Transfer and Inkjet color printer | |

VANES

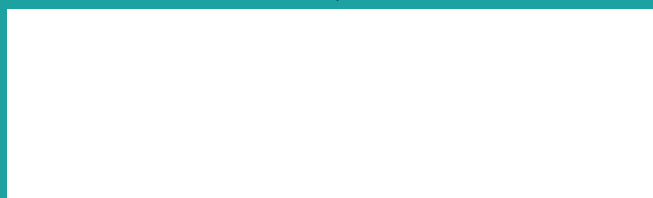
| P/N | MODEL | DESCRIPTION |
|--------|-----------|---|
| LMX493 | VANES 38 | Set of 3 vanes (fins) for 38 mm cores. |
| LMX494 | VANES 40 | Set of 3 vanes (fins) for 40 mm cores. |
| LMX495 | VANES 44 | Set of 3 vanes (fins) for 44 mm cores. |
| LMX496 | VANES 50 | Set of 3 vanes (fins) for 50 mm cores. |
| LMX497 | VANES 70 | Set of 3 vanes (fins) for 70 mm cores. |
| LMX498 | VANES 76 | Set of 3 vanes (fins) for 76 mm cores. |
| LMX499 | VANES 100 | Set of 3 vanes (fins) for 100 mm cores. |

GENERAL

- Power Supply: 100-240V- 50Hz, Output 15VDC-4,33A
- Limited Warranty of 2 Years, 1 Year on the Power Supply



Your local partner:



+32 2 375 69 60

brussels@labelmate.com

Bergensesteenweg 78
1651 Lot (Belgium)

www.labelmate.com