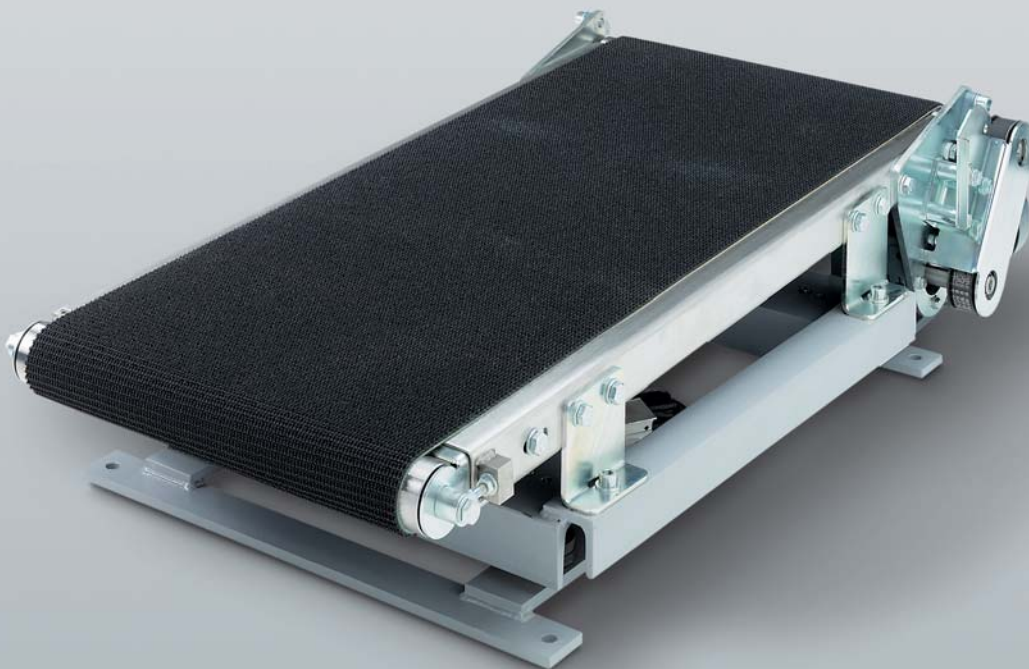


LUGGAGE SCALE

PRODUCT NUMBER 2740 INCL. 2819, 2883 AND 2885

System solutions



- › Easy to adapt
- › Modular system components
- › Plug-in modules
- › Reference module principle
- › Flat design

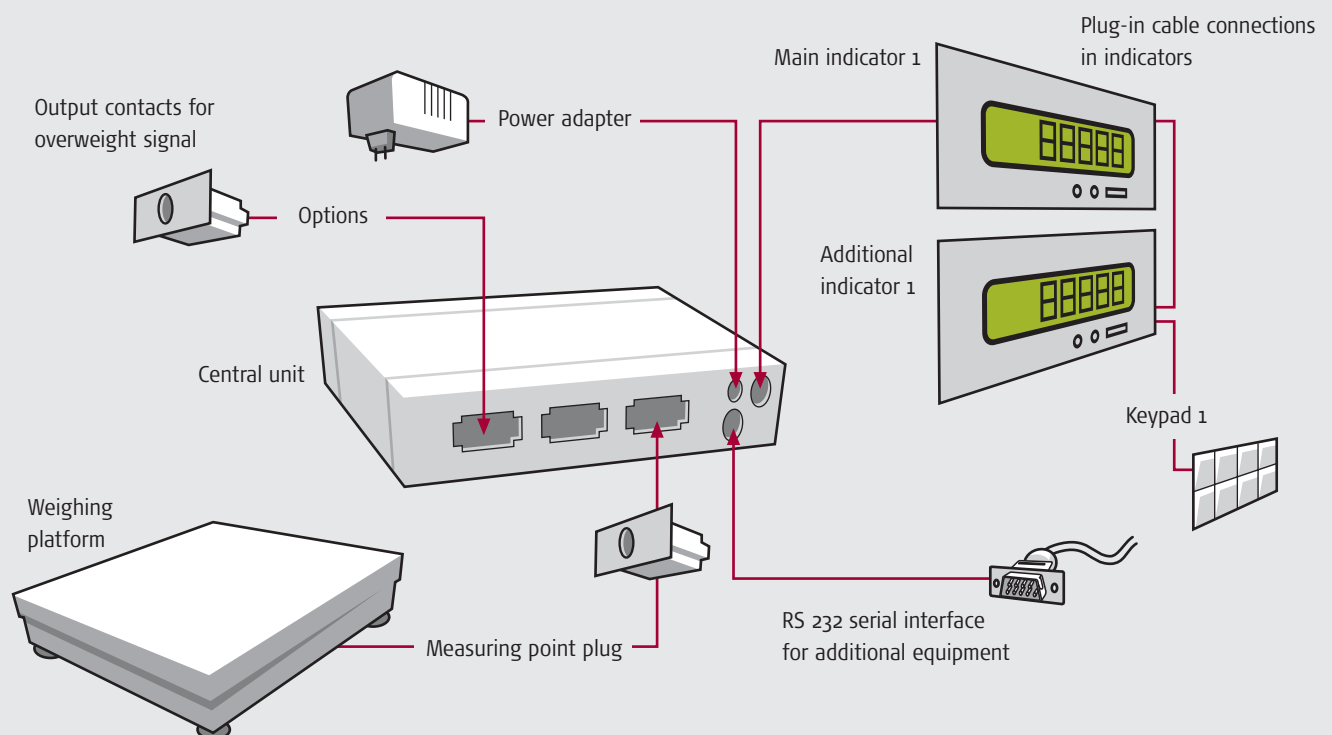
Features

Soehnle Professional luggage scales are weighing facilities specially designed for everyday reliable and user-friendly weighing facilities at airport check-in desks. Standardised modules result in a variable system. The weighing system is optimally adapted to a particular application by close consultation with our customers, i.e. materials handling system manufacturers. Since we place a major focus on service at Soehnle Professional, you will receive support from an experienced team of engineers who will accompany the project from the planning stage through to commissioning. As all Soehnle Professional scales, Luggage Scale 2740 is carefully adapted, tested and prepared for installation.

Technical data

- > Weighing range: 2 x 3000e
- > Approval in compliance with OIML R76, Class III
- > Zero range -1% to +3% of weighing range
- > Operating temperature -10°C to +40°C
- > Variable adaptation possible, function dependent on operating specifications
- > Backlit LCD
- > Digit height 20mm
- > Mains powered 230V, 50/60Hz
- > RS 232 serial interface, V24
- > Indicator and keypad for decentralised installation

Diagram of luggage scale



Electronics

- > Power adapter 230VAC, 50Hz (standard)
- > Optional: assembled bench power supply 230VAC, 50Hz, keypad cable with open end to connection on customer supplied keypad

Functions

- > On/off, zeroing
- > Totalising
- > Show total
- > Clear total
- > Overweight indicator (red LED)
- > Totalising performed (yellow LED)
- > Floating overweight signal (option)

Other functions on request.

Weighing platforms

Type 2819

- > 4 strain gauge load cells
- > Dimensions: up to lwx 1800 x 800mm
- > Load-bearing capability up to 300kg
- > EU approval possible ex factory

Type 2883

- > 2 strain gauge load cells
- > Dimensions: up to lwx 2500 x 660mm
- > Load-bearing capability up to 300kg
- > EU approval possible ex factory

Type 2885

- > 1 strain gauge load cell
- > Dimensions: up to lwx 1000 x 600mm
- > Load-bearing capability up to 250kg
- > EU approval possible ex factory

Indicators



Square as standard

Indicates weight or total weight
Indicates overweight by red LED
Indicates total weight by yellow LED



Oval as standard

Indicates weight or total weight
Indicates overweight by red LED
Indicates total weight by yellow LED



Double indicator: main indicator (for operators)

Simultaneous indication of unit and total weight and number of luggage items



Double indicator: additional indicator (for passengers)

Indicates total weight



Compact indicator

Simultaneously indicates piece counts and unit or total weight

Soehnle Professional GmbH & Co. KG

Wilhelm-Soehnle-Straße 2
71540 Murrhardt

Phone +49 (0) 7192/93 19-0
E-Mail info@soehnle-professional.com

SCALES, SYSTEM SOLUTIONS AND SPECIAL DEVELOPMENTS

