

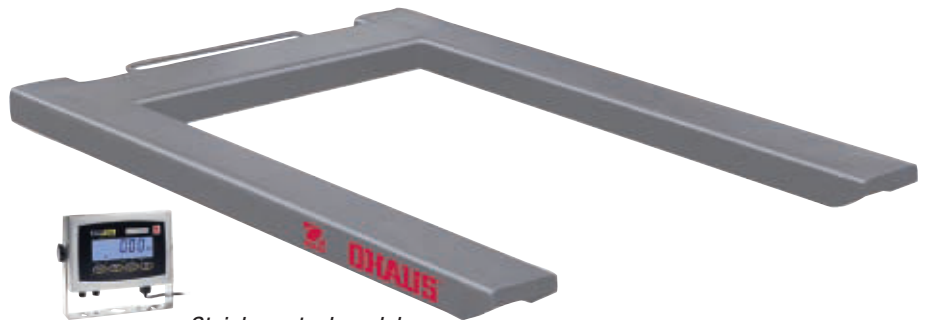


VE Series

U-Frame Pallet Scales



*Painted steel model
shown with T31P indicator*



*Stainless steel model
shown with T31XW indicator*

Affordability, Durability, OHAUS Quality & Value

The OHAUS VE Series U-Frame Pallet Scales are the value solution for your dry or washdown weighing needs in industrial and commercial applications. Their high-quality material and construction are designed for years of trouble-free service. Together with mobility features such as lifting handle and front-mounted rollers, the OHAUS VE Series U-Frame Pallet Scales offers a unique combination of convenience, value and quality that your company can depend on.

Standard Features Include:

- Popular 1500kg and 2500kg capacity model
- Painted carbon steel and stainless steel models with handle and rollers for convenient lifting and relocation
- Two rugged OHAUS indicator models:
 - T31P indicator features a high-impact ABS housing with key-holes on the rear cover for wall mounting
 - T31XW indicator features a 304 stainless steel IP66 housing
- Four OIML R60 approved IP67 alloy steel load cells
- Four load cell mounted feet, self-swiveling ball-in-cup design
- IP65 dust and water immersion protected stainless steel junction box
- Available second stage verified scale models 1:3000e with OHAUS indicators
- OHAUS indicators featuring backlit LCD displays with high-visibility 25mm high digits, Five weighing units (kg, g, lb, oz, lb:oz), RS232, rechargeable lead acid battery operation and piece counting function

VE Series

U-Frame Pallet Scales

Specifications

Platform Models	VE1500P / VE2500P	VE1500PW / VE2500PW
Net Weight	51kg	47kg
External Dimensions	1260L x 840W x 90minH mm	
Scale Models	VE1500P31P / VE2500P31P	VE1500P31XW / VE2500P31XW
Scale Models , Class III, EC Type approved, 2nd Stage	VE1500P31PM	VE1500P31XWM
Platform Material	Carbon steel, painted	Stainless steel, sand-blasted
Capacity x Readability	1500 kg x 0.5 kg / 2500 kg x 1 kg	
Approval Resolution	1:3000e	
Maximum Central Load	3250 kg	
Operating Temperature / Humidity	-10°C to 40°C / 0% to 95% relative humidity, non-condensing	
Load Cell	4 x IP67 alloy steel, shear beam, OIML C3	
Load Cell Capacity Emax	1000kg	
Output Impedance / Excitation Voltage	350 ohm ± 3.5 ohm / 5V~15V, DC/AC	
Feet	2 x front edge rollers with 4 x self-swiveling ball-in-cup design with rubber bottom	
Junction Box	Rear-access, IP65, 304 stainless steel, 194L x 130W x 45H mm, with 5m long cable	
Other Features	Integrated lifting handle, external level indicator	
Indicators	T31P, ABS plastic	T31XW, 304 stainless steel IP66
Weighing Units	kg, g, lb, oz, lb:oz	
Display	Backlit LCD, 25 mm high, 6-digit, 7-segment	
Interface	Built-in RS232C, bi-directional	
Power	AC adapter	Universal switching power supply
Battery	Internal rechargeable sealed lead acid battery (100-hour typical operation on full charge)	
Other Indicator Features	Piece Counting 1d min APW, Geographical gravity adjustment, Environmental filtering	

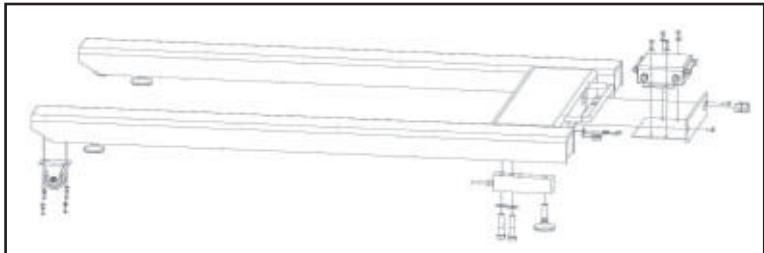
Options and Accessories

	Ohaus Number
Wall mount bracket kit, T31P	80251747
Wall mount bracket kit, T31XW	80251748
Foot plate kit, VE painted steel	72198344
Foot plate kit, VE-W stainless steel	72198345

Approvals:

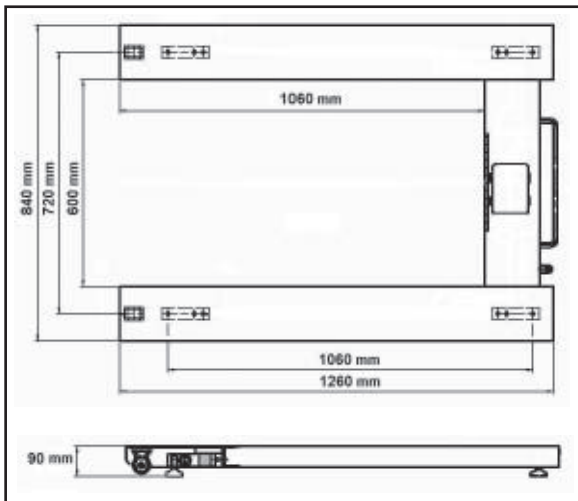
- Safety and EMC: EN60950, EN61326, FCC, CE, CULUS
- EC Type Approval:
 - T31xx Series Indicator: TC7085 / T5980
 - Load Cell: OIML R60 PTB D09-03.19
- Quality: Ohaus quality management system registered to ISO 9001:2000

Construction and Other Features



Handle and front-mounted rollers for convenient lifting and relocation of the scale

*Outline Dimensions



Featured Components



www.ohaus.com

* ISO 9001:2000
Registered Quality Management System

80774342 © Copyright Ohaus Corporation

